

Rapid fittings for plastic tubes

Series 1000 Rapid

Tubes \varnothing 5/3, 6/4, 8/6, 10/8, 12/10, 15/12,5

Connections M5, M6, M12x1, M12x1,25, G1/8, G1/4, G3/8, G1/2
R1/8, R1/4, R3/8, R1/2

4



The rapid fittings come in 28 different versions and are easily fitted without the use of a spanner.

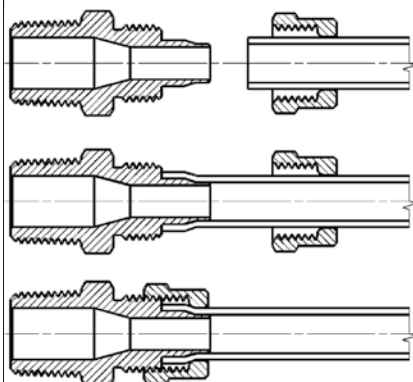
They can also be used with rigid PA tubes. A locking nut is provided and can be tightened both manually and with a spanner.

The special shape of the guiding cone ensures that the tube cannot be accidentally cut.

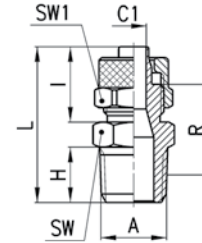
GENERAL DATA

| | |
|------------------------|--|
| Materials | body and nut brass OT58, nickel-plated sealing on thread: PTFE, PA |
| Threads | GAS, conical ISO 7 (BSPT) GAS, cylindrical ISO 228 (BSP) M5 - M6 NPT and metric (available on request) |
| Pressure | the nominal pressure of the fittings is always higher than the pressure of the tube |
| Tube to connect | PA polyethylene braided PVC rilsan polyurethane |
| Diameters | from 5/3 ÷ 15/12.5 mm |
| Fluid | compressed air low pressure fluids |
| Temperature | (see data for tubing used) |

Fitting with pipe connection



Fittings Mod. 1510

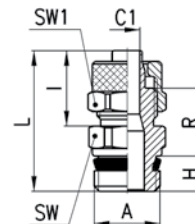


| DIMENSIONS | | | | | | | | | |
|-------------------|---------|----------|-----|------|------|------|------|----|-----|
| Mod. | Tube | A | C1 | H | I | L | R | SW | SW1 |
| 1510 5/3-1/8 | 5/3 | R1/8 | 2 | 7,5 | 12,5 | 24,5 | 14,5 | 12 | 8 |
| 1510 6/4-1/8 | 6/4 | R1/8 | 3 | 7,5 | 15 | 27 | 16 | 12 | 12 |
| 1510 6/4-1/4 | 6/4 | R1/4 | 3 | 11 | 15 | 31 | 18,5 | 14 | 12 |
| 1510 6/4-3/8 | 6/4 | R3/8 | 3 | 11,5 | 15 | 31,5 | 18,5 | 17 | 12 |
| 1510 6/4-1/2 | 6/4 | R1/2 | 3 | 14 | 15 | 34,5 | 20 | 22 | 12 |
| 1510 6/4-M12x1,25 | 6/4 | M12X1,25 | 3 | 10 | 15 | 30 | 18 | 13 | 12 |
| 1510 8/6-1/8 | 8/6 | R1/8 | 5 | 7,5 | 15 | 27 | 16 | 13 | 14 |
| 1510 8/6-1/4 | 8/6 | R1/4 | 5 | 11 | 15 | 31 | 18,5 | 14 | 14 |
| 1510 8/6-3/8 | 8/6 | R3/8 | 5 | 11,5 | 15 | 31,5 | 18,5 | 17 | 14 |
| 1510 8/6-1/2 | 8/6 | R1/2 | 5 | 14 | 15 | 34,5 | 20 | 22 | 14 |
| 1510 10/8-1/8 | 10/8 | R1/8 | 6,5 | 7,5 | 16,5 | 28,5 | 16,5 | 14 | 16 |
| 1510 10/8-1/4 | 10/8 | R1/4 | 6,5 | 11 | 16,5 | 32,5 | 19 | 14 | 16 |
| 1510 10/8-3/8 | 10/8 | R3/8 | 6,5 | 11,5 | 16,5 | 33 | 19 | 17 | 16 |
| 1510 10/8-1/2 | 10/8 | R1/2 | 6,5 | 14 | 16,5 | 36 | 20,5 | 22 | 16 |
| 1510 12/10-3/8 | 12/10 | R3/8 | 8,5 | 11,5 | 18 | 34,5 | 19 | 17 | 19 |
| 1510 12/10-1/2 | 12/10 | R1/2 | 8,5 | 14 | 18 | 37,5 | 20,5 | 22 | 19 |
| 1510 15/12,5-1/2 | 15/12,5 | R1/2 | 11 | 14 | 20 | 39,5 | 21 | 22 | 22 |

Fittings Mod. 1511

Sprint®

* = with O-Ring assembled.

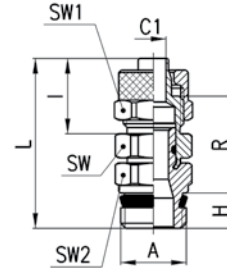


| DIMENSIONS | | | | | | | | | |
|------------------|---------|------|-----|-----|------|------|------|----|-----|
| Mod. | Tube | A | C1 | H | I | L | R | SW | SW1 |
| 1511 5/3-M5 | 5/3 | M5 | 2 | 4 | 12,5 | 21 | 10,5 | 8 | 8 * |
| 1511 5/3-M6 | 5/3 | M6 | 2 | 4 | 12,5 | 21 | 10,5 | 9 | 8 * |
| 1511 5/3-1/8 | 5/3 | G1/8 | 2 | 5,5 | 12,5 | 23,8 | 11,8 | 12 | 8 |
| 1511 6/4-M5 | 6/4 | M5 | 3 | 4 | 13,5 | 22 | 10,5 | 8 | 9 * |
| 1511 6/4-M6 | 6/4 | M6 | 3 | 4 | 13,5 | 22 | 10,5 | 9 | 9 * |
| 1511 6/4-1/8 | 6/4 | G1/8 | 3 | 5,5 | 15 | 26,3 | 13,3 | 12 | 12 |
| 1511 6/4-1/4 | 6/4 | G1/4 | 3 | 7 | 15 | 28 | 13,5 | 14 | 12 |
| 1511 6/4-3/8 | 6/4 | G3/8 | 3 | 8 | 15 | 29,3 | 13,8 | 19 | 12 |
| 1511 8/6-1/8 | 8/6 | G1/8 | 5 | 5,5 | 15 | 26,3 | 13,3 | 12 | 14 |
| 1511 8/6-1/4 | 8/6 | G1/4 | 5 | 7 | 15 | 28 | 13,5 | 14 | 14 |
| 1511 8/6-3/8 | 8/6 | G3/8 | 5 | 8 | 15 | 29,3 | 13,8 | 19 | 14 |
| 1511 10/8-1/8 | 10/8 | G1/8 | 6,5 | 5,5 | 16,5 | 27,8 | 13,8 | 14 | 16 |
| 1511 10/8-1/4 | 10/8 | G1/4 | 6,5 | 7 | 16,5 | 29,5 | 14 | 14 | 16 |
| 1511 10/8-3/8 | 10/8 | G3/8 | 6,5 | 8 | 16,5 | 30,8 | 14,3 | 19 | 16 |
| 1511 10/8-1/2 | 10/8 | G1/2 | 6,5 | 9 | 16,5 | 32,5 | 15 | 22 | 16 |
| 1511 12/10-3/8 | 12/10 | G3/8 | 8,5 | 8 | 18 | 32,3 | 14,3 | 19 | 19 |
| 1511 12/10-1/2 | 12/10 | G1/2 | 8,5 | 9 | 18 | 34 | 15 | 22 | 19 |
| 1511 15/12,5-1/2 | 15/12,5 | G1/2 | 11 | 9 | 20 | 36 | 15,5 | 22 | 22 |

Fittings Mod. 1560

Sprint®

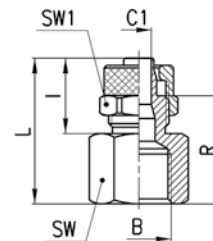
Male stud swivel Sprint.



DIMENSIONS

| Mod. | Tube | A | C1 | H | I | L | R | SW | SW1 | SW2 |
|-----------------------|-------|------|-----|-----|------|------|------|----|-----|-----|
| 1560 6/4-1/8 | 6/4 | G1/8 | 3 | 5,5 | 15 | 31 | 18 | 12 | 12 | 12 |
| 1560 6/4-1/4 | 6/4 | G1/4 | 3 | 7 | 15 | 32,5 | 18 | 12 | 12 | 14 |
| 1560 8/6-1/8 | 8/6 | G1/8 | 5 | 5,5 | 15 | 32 | 19 | 13 | 14 | 12 |
| 1560 8/6-1/4 | 8/6 | G1/4 | 5 | 7 | 15 | 33,5 | 19 | 13 | 14 | 14 |
| 1560 10/8-1/4 | 10/8 | G1/4 | 6,5 | 7 | 16,5 | 34,5 | 19 | 14 | 16 | 14 |
| 1560 10/8-3/8 | 10/8 | G3/8 | 6,5 | 8 | 16,5 | 36 | 19,5 | 14 | 16 | 19 |
| 1560 12/10-3/8 | 12/10 | G3/8 | 6,5 | 8 | 18 | 38 | 20 | 17 | 19 | 19 |

Fittings Mod. 1463



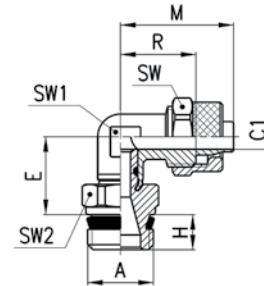
DIMENSIONS

| Mod. | Tube | B | C1 | I | L | R | SW | SW1 |
|-----------------------|-------|------|-----|------|------|------|----|-----|
| 1463 5/3-1/8 | 5/3 | G1/8 | 2 | 12,5 | 22,5 | 16,5 | 13 | 8 |
| 1463 6/4-1/8 | 6/4 | G1/8 | 3 | 15 | 25 | 17,5 | 13 | 12 |
| 1463 6/4-1/4 | 6/4 | G1/4 | 3 | 15 | 26,5 | 21,5 | 17 | 12 |
| 1463 6/4-3/8 | 6/4 | G3/8 | 3 | 15 | 27,5 | 22 | 20 | 12 |
| 1463 8/6-1/8 | 8/6 | G1/8 | 5 | 15 | 25 | 17,5 | 13 | 14 |
| 1463 8/6-1/4 | 8/6 | G1/4 | 5 | 15 | 26,5 | 21,5 | 17 | 14 |
| 1463 8/6-3/8 | 8/6 | G3/8 | 5 | 15 | 27,5 | 22 | 20 | 14 |
| 1463 10/8-1/8 | 10/8 | G1/8 | 6,5 | 16,5 | 26,5 | 18 | 14 | 16 |
| 1463 10/8-1/4 | 10/8 | G1/4 | 6,5 | 16,5 | 28 | 22 | 17 | 16 |
| 1463 10/8-3/8 | 10/8 | G3/8 | 6,5 | 16,5 | 29 | 22,5 | 20 | 16 |
| 1463 10/8-1/2 | 10/8 | G1/2 | 6,5 | 16,5 | 33 | 26 | 24 | 16 |
| 1463 12/10-3/8 | 12/10 | G3/8 | 8,5 | 18 | 30,5 | 22,5 | 20 | 19 |

Fittings Mod. 1541

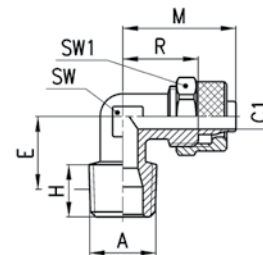
Sprint®

Swivel elbow Mod. Sprint.



| DIMENSIONS | | | | | | | | | | |
|---------------|------|------|-----|----|-----|------|----|----|-----|-----|
| Mod. | Tube | A | C1 | E | H | M | R | SW | SW1 | SW2 |
| 1541 6/4-1/8 | 6/4 | G1/8 | 3 | 15 | 5,5 | 22,5 | 15 | 12 | 10 | 12 |
| 1541 6/4-1/4 | 6/4 | G1/4 | 3 | 15 | 7 | 22,5 | 15 | 12 | 10 | 14 |
| 1541 8/6-1/8 | 8/6 | G1/8 | 5 | 15 | 5,5 | 22,5 | 15 | 14 | 10 | 12 |
| 1541 8/6-1/4 | 8/6 | G1/4 | 5 | 15 | 7 | 22,5 | 15 | 14 | 10 | 14 |
| 1541 10/8-1/4 | 10/8 | G1/4 | 6,5 | 16 | 7 | 25,5 | 17 | 16 | 12 | 14 |

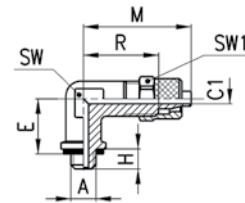
Fittings Mod. 1500



| DIMENSIONS | | | | | | | | | |
|-------------------|---------|----------|-----|------|------|------|------|----|-----|
| Mod. | Tube | A | C1 | E | H | M | R | SW | SW1 |
| 1500 5/3-1/8 | 5/3 | R1/8 | 2 | 13 | 7,5 | 21,5 | 15 | 8 | 8 |
| 1500 6/4-1/8 | 6/4 | R1/8 | 3 | 13 | 7,5 | 22,5 | 15 | 8 | 12 |
| 1500 6/4-1/4 | 6/4 | R1/4 | 3 | 15,5 | 11 | 22,5 | 15 | 10 | 12 |
| 1500 6/4-3/8 | 6/4 | R3/8 | 3 | 17 | 11,5 | 23,5 | 16 | 12 | 12 |
| 1500 6/4-M12x1,25 | 6/4 | M12x1,25 | 3 | 14 | 10 | 22,5 | 15 | 10 | 12 |
| 1500 8/6-1/8 | 8/6 | R1/8 | 5 | 13 | 7,5 | 22,5 | 15 | 10 | 14 |
| 1500 8/6-1/4 | 8/6 | R1/4 | 5 | 15,5 | 11 | 22,5 | 15 | 10 | 14 |
| 1500 8/6-3/8 | 8/6 | R3/8 | 5 | 17 | 11,5 | 24 | 16 | 12 | 14 |
| 1500 8/6-1/2 | 8/6 | R1/2 | 5 | 21,5 | 14 | 27 | 19 | 16 | 14 |
| 1500 10/8-1/8 | 10/8 | R1/8 | 6,5 | 15 | 7,5 | 25,5 | 17 | 12 | 16 |
| 1500 10/8-1/4 | 10/8 | R1/4 | 6,5 | 17 | 11 | 25,5 | 17 | 12 | 16 |
| 1500 10/8-3/8 | 10/8 | R3/8 | 6,5 | 16,5 | 11,5 | 25,5 | 17 | 12 | 16 |
| 1500 10/8-1/2 | 10/8 | R1/2 | 6,5 | 21 | 14 | 28,5 | 20 | 16 | 16 |
| 1500 12/10-3/8 | 12/10 | R3/8 | 8,5 | 19 | 11,5 | 30 | 20 | 14 | 19 |
| 1500 12/10-1/2 | 12/10 | R1/2 | 8,5 | 21 | 14 | 30,5 | 20,5 | 16 | 19 |
| 1500 15/12,5-1/2 | 15/12,5 | R1/2 | 11 | 21 | 14 | 34 | 22,5 | 16 | 22 |

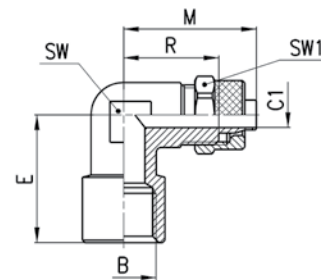
Fittings Mod. 1501 5/3-M5

With Mod. 2661 assembled.



| DIMENSIONS | | | | | | | | | |
|--------------------|------|----|----|----|---|------|----|----|-----|
| Mod. | Tube | A | C1 | E | H | M | R | SW | SW1 |
| 1501 5/3-M5 | 5/3 | M5 | 2 | 11 | 4 | 21,5 | 15 | 8 | 8 |

Fittings Mod. 1493

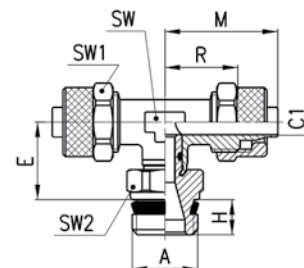


| DIMENSIONS | | | | | | | | | |
|-----------------------|-------|------|-----|------|------|------|----|-----|--|
| Mod. | Tube | B | C1 | E | M | R | SW | SW1 | |
| 1493 6/4-1/8 | 6/4 | G1/8 | 3 | 19 | 22,5 | 15 | 10 | 12 | |
| 1493 6/4-1/4 | 6/4 | G1/4 | 3 | 23,5 | 26 | 18,5 | 14 | 12 | |
| 1493 8/6-1/8 | 8/6 | G1/8 | 5 | 19 | 22,5 | 15 | 10 | 14 | |
| 1493 8/6-1/4 | 8/6 | G1/4 | 5 | 23,5 | 26 | 19 | 14 | 14 | |
| 1493 10/8-1/4 | 10/8 | G1/4 | 6,5 | 23,5 | 27,5 | 18 | 14 | 16 | |
| 1493 12/10-3/8 | 12/10 | G3/8 | 8,5 | 24,5 | 30,5 | 20,5 | 16 | 19 | |

Fittings Mod. 1431

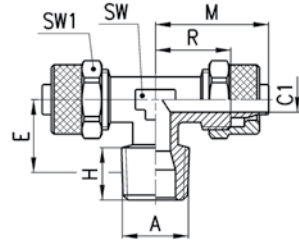
Sprint®.

Swivel branch tee Sprint.



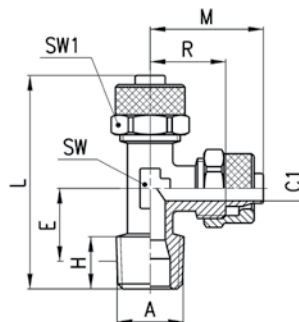
| DIMENSIONS | | | | | | | | | | |
|----------------------|------|------|-----|----|-----|------|----|----|-----|-----|
| Mod. | Tube | A | C1 | E | H | M | R | SW | SW1 | SW2 |
| 1431 6/4-1/8 | 6/4 | G1/8 | 3 | 15 | 5,5 | 22,5 | 15 | 10 | 12 | 12 |
| 1431 6/4-1/4 | 6/4 | G1/4 | 3 | 15 | 7 | 22,5 | 15 | 10 | 12 | 14 |
| 1431 8/6-1/8 | 8/6 | G1/8 | 5 | 15 | 5,5 | 22,5 | 15 | 10 | 14 | 12 |
| 1431 8/6-1/4 | 8/6 | G1/4 | 5 | 15 | 7 | 22,5 | 15 | 10 | 14 | 14 |
| 1431 10/8-1/4 | 10/8 | G1/4 | 6,5 | 16 | 7 | 25,5 | 17 | 12 | 16 | 14 |

Fittings Mod. 1410



| DIMENSIONS | | | | | | | | | | |
|------------------|---------|------|-----|------|------|------|------|----|-----|--|
| Mod. | Tube | A | C1 | E | H | M | R | SW | SW1 | |
| 1410 5/3-1/8 | 5/3 | R1/8 | 2 | 12,5 | 7,5 | 21,5 | 15 | 8 | 8 | |
| 1410 6/4-1/8 | 6/4 | R1/8 | 3 | 12,5 | 7,5 | 22,5 | 15 | 8 | 12 | |
| 1410 6/4-1/4 | 6/4 | R1/4 | 3 | 15,5 | 11 | 22,5 | 15 | 10 | 12 | |
| 1410 8/6-1/8 | 8/6 | R1/8 | 5 | 13 | 7,5 | 22,5 | 15 | 10 | 14 | |
| 1410 8/6-1/4 | 8/6 | R1/4 | 5 | 15,5 | 11 | 22,5 | 15 | 10 | 14 | |
| 1410 10/8-1/8 | 10/8 | R1/8 | 6,5 | 15 | 7,5 | 25,5 | 17 | 12 | 16 | |
| 1410 10/8-1/4 | 10/8 | R1/4 | 6,5 | 17 | 11 | 25,5 | 17 | 12 | 16 | |
| 1410 10/8-3/8 | 10/8 | R3/8 | 6,5 | 17 | 11,5 | 25,5 | 17 | 12 | 16 | |
| 1410 10/8-1/2 | 10/8 | R1/2 | 6,5 | 21,5 | 14 | 28,5 | 20 | 16 | 16 | |
| 1410 12/10-3/8 | 12/10 | R3/8 | 8,5 | 19 | 11,5 | 30 | 20 | 14 | 19 | |
| 1410 12/10-1/2 | 12/10 | R1/2 | 8,5 | 21,5 | 14 | 30,5 | 20,5 | 16 | 19 | |
| 1410 15/12,5-1/2 | 15/12,5 | R1/2 | 11 | 21,5 | 14 | 34 | 22,5 | 16 | 22 | |

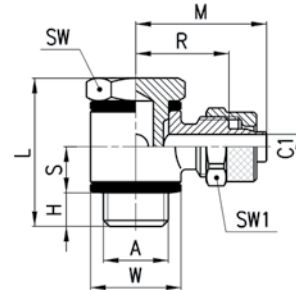
Fittings Mod. 1420



| DIMENSIONS | | | | | | | | | | |
|---------------|------|------|-----|------|-----|------|------|----|----|-----|
| Mod. | Tube | A | C1 | E | H | L | M | R | SW | SW1 |
| 1420 5/3-1/8 | 5/3 | R1/8 | 2 | 12,5 | 7,5 | 37,5 | 21,5 | 15 | 8 | 8 |
| 1420 6/4-1/8 | 6/4 | R1/8 | 3 | 12,5 | 7,5 | 38,5 | 22,5 | 15 | 8 | 12 |
| 1420 6/4-1/4 | 6/4 | R1/4 | 3 | 15,5 | 11 | 43 | 22,5 | 15 | 10 | 12 |
| 1420 8/6-1/8 | 8/6 | R1/8 | 5 | 13 | 7,5 | 39 | 22,5 | 15 | 10 | 14 |
| 1420 8/6-1/4 | 8/6 | R1/4 | 5 | 15,5 | 11 | 43 | 22,5 | 15 | 10 | 14 |
| 1420 10/8-1/8 | 10/8 | R1/8 | 6,5 | 15 | 7,5 | 43,5 | 25,5 | 17 | 12 | 16 |
| 1420 10/8-1/4 | 10/8 | R1/4 | 6,5 | 17 | 11 | 47 | 25,5 | 17 | 12 | 16 |

Fittings mod. 1521

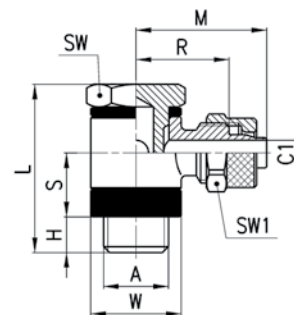
On demand only.



| DIMENSIONS | | | | | | | | | | | |
|--------------|------|------|----|---|------|-----|------|------|-----|----|-----|
| Mod. | Tube | A | C1 | H | L | S | M | R | W | SW | SW1 |
| 1521 5/3-M5 | 5/3 | M5 | 2 | 3 | 18 | 4,5 | 17 | 10,5 | ∅9 | 8 | 8 |
| 1521 5/3-1/8 | 5/3 | G1/8 | 2 | 6 | 27 | 8,5 | 22,5 | 16 | ∅14 | 14 | 8 |
| 1521 6/4-M5 | 6/4 | M5 | 3 | 3 | 18 | 4,5 | 18 | 10,5 | ∅9 | 8 | 9 |
| 1521 6/4-1/8 | 6/4 | G1/8 | 3 | 6 | 27 | 8,5 | 24 | 16,5 | ∅14 | 14 | 12 |
| 1521 6/4-1/4 | 6/4 | G1/4 | 3 | 8 | 29,5 | 8,5 | 26 | 18,5 | ∅18 | 17 | 12 |
| 1521 6/4-3/8 | 6/4 | G3/8 | 3 | 8 | 30 | 8,5 | 28 | 20,5 | ∅21 | 19 | 12 |
| 1521 8/6-1/8 | 8/6 | G1/8 | 5 | 6 | 27 | 8,5 | 24 | 16,5 | ∅14 | 14 | 14 |
| 1521 8/6-1/4 | 8/6 | G1/4 | 5 | 8 | 29,5 | 8,5 | 26 | 18,5 | ∅18 | 17 | 14 |
| 1521 8/6-3/8 | 8/6 | G3/8 | 5 | 8 | 30 | 8,5 | 28 | 20,5 | ∅21 | 19 | 14 |

Fittings Mod. 1525

On demand only.



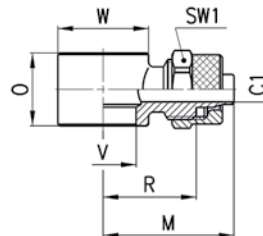
| DIMENSIONS | | | | | | | | | | | |
|------------------|---------|------|-----|---|------|------|------|------|-----|----|-----|
| Mod. | Tube | A | C1 | H | L | S | M | R | W | SW | SW1 |
| 1525 6/4-1/8 | 6/4 | G1/8 | 3 | 6 | 31 | 12,5 | 24 | 16,5 | ∅14 | 14 | 12 |
| 1525 6/4-1/4 | 6/4 | G1/4 | 3 | 8 | 33,5 | 12,5 | 26 | 18,5 | ∅18 | 17 | 12 |
| 1525 6/4-3/8 | 6/4 | G3/8 | 3 | 8 | 34 | 12,5 | 28 | 20,5 | ∅21 | 19 | 12 |
| 1525 8/6-1/8 | 8/6 | G1/8 | 5 | 6 | 31 | 12,5 | 24 | 16,5 | ∅14 | 14 | 14 |
| 1525 8/6-1/4 | 8/6 | G1/4 | 5 | 8 | 33,5 | 12,5 | 26 | 18,5 | ∅18 | 17 | 14 |
| 1525 8/6-3/8 | 8/6 | G3/8 | 5 | 8 | 34 | 12,5 | 28 | 20,5 | ∅21 | 19 | 14 |
| 1525 10/8-1/8 | 10/8 | G1/8 | 6,5 | 6 | 31 | 12,5 | 25 | 16,5 | ∅14 | 14 | 16 |
| 1525 10/8-1/4 | 10/8 | G1/4 | 6,5 | 8 | 33,5 | 12,5 | 27 | 18,5 | ∅18 | 17 | 16 |
| 1525 10/8-3/8 | 10/8 | G3/8 | 6,5 | 8 | 34 | 12,5 | 29,5 | 21 | ∅21 | 19 | 16 |
| 1525 10/8-1/2 | 10/8 | G1/2 | 6,5 | 9 | 35 | 12,5 | 32 | 23,5 | ∅26 | 27 | 16 |
| 1525 12/10-3/8 | 12/10 | G3/8 | 8 | 8 | 34 | 12,5 | 31,5 | 21,5 | ∅21 | 19 | 19 |
| 1525 12/10-1/2 | 12/10 | G1/2 | 8,5 | 9 | 35 | 12,5 | 33,5 | 23,5 | ∅26 | 27 | 19 |
| 1525 15/12,5-1/2 | 15/12,5 | G1/2 | 11 | 9 | 35 | 12,5 | 36,5 | 25 | ∅26 | 27 | 22 |

Fittings Mod. 1610

Assembly with Mod. 1631, 1635.

* = Assembly with Mod. 1635

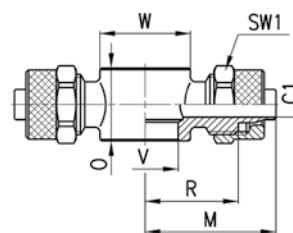
● = Assembly with Mod. SCU, SVU, SCO...M5.



| DIMENSIONS | | | | | | | | |
|------------------|---------|-----|------|------|------|------|------|------|
| Mod. | Tube | C1 | M | O | R | V | W | SW1 |
| 1610 5/3-M5 | 5/3 | 2 | 17 | 9 | 10,5 | 5,1 | Ø 9 | 8 |
| 1610 5/3-M6 | 5/3 | 2 | 17 | 9 | 10,5 | 5,1 | Ø 9 | 8 ● |
| 1610 5/3-1/8 | 5/3 | 2 | 22,5 | 14,5 | 16 | 9,8 | Ø 14 | 8 |
| 1610 6/4-M5 | 6/4 | 3 | 18 | 9 | 10,5 | 5,1 | Ø 9 | 9 |
| 1610 6/4-M6 | 6/4 | 2 | 18 | 9 | 10,5 | 5,1 | Ø 9 | 9 ● |
| 1610 6/4-1/8 | 6/4 | 3 | 24 | 14,5 | 16,5 | 9,8 | Ø 14 | 12 |
| 1610 6/4-1/4 | 6/4 | 3 | 26 | 14,5 | 18,5 | 13,2 | Ø 18 | 12 |
| 1610 6/4-3/8 | 6/4 | 3 | 28 | 14,5 | 20,5 | 16,7 | Ø 21 | 12 |
| 1610 8/6-1/8 | 8/6 | 5 | 24 | 14,5 | 16,5 | 9,8 | Ø 14 | 14 |
| 1610 8/6-1/4 | 8/6 | 5 | 26 | 14,5 | 18,5 | 13,2 | Ø 18 | 14 |
| 1610 8/6-3/8 | 8/6 | 5 | 28 | 14,5 | 20,5 | 16,7 | Ø 21 | 14 |
| 1610 10/8-1/8 | 10/8 | 6,5 | 25 | 14,5 | 16,5 | 9,8 | Ø 14 | 16 * |
| 1610 10/8-1/4 | 10/8 | 6,5 | 27 | 14,5 | 18,5 | 13,2 | Ø 18 | 16 * |
| 1610 10/8-3/8 | 10/8 | 6,5 | 29,5 | 14,5 | 21 | 16,7 | Ø 21 | 16 * |
| 1610 10/8-1/2 | 10/8 | 6,5 | 32 | 14,5 | 23,5 | 21 | Ø 26 | 16 * |
| 1610 12/10-3/8 | 12/10 | 8 | 31,5 | 14,5 | 21,5 | 16,7 | Ø 21 | 19 * |
| 1610 12/10-1/2 | 12/10 | 8,5 | 33,5 | 14,5 | 23,5 | 21 | Ø 26 | 19 * |
| 1610 15/12,5-1/2 | 15/12,5 | 11 | 36,5 | 14,5 | 25 | 21 | Ø 26 | 22 * |

Fittings Mod. 1620

Assembly with Mod. 1631, 1635.

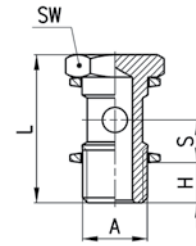


| DIMENSIONS | | | | | | | | |
|--------------|------|----|----|------|------|------|------|-----|
| Mod. | Tube | C1 | M | O | R | V | W | SW1 |
| 1620 6/4-M5 | 6/4 | 3 | 18 | 9 | 10,5 | 5,1 | Ø 9 | 9 |
| 1620 6/4-1/8 | 6/4 | 3 | 24 | 14,5 | 16,5 | 9,8 | Ø 14 | 12 |
| 1620 6/4-1/4 | 6/4 | 3 | 26 | 14,5 | 18,5 | 13,2 | Ø 18 | 12 |
| 1620 8/6-1/8 | 8/6 | 5 | 24 | 14,5 | 16,5 | 9,8 | Ø 14 | 14 |
| 1620 8/6-1/4 | 8/6 | 5 | 26 | 14,5 | 18,5 | 13,2 | Ø 18 | 14 |

Fittings Mod. 1631 01

Assembly with adjustable fittings Mod. 6610; 6620; 1610; 1620; 2023; 1170.

* = zinc-plated steel.

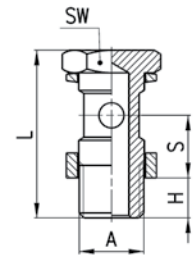


| DIMENSIONS | | | | | | |
|--------------------|------|---|------|-----|----|---|
| Mod. | A | H | L | S | SW | |
| 1631 01-M5 | M5 | 4 | 18 | 5,5 | 8 | * |
| 1631 01-1/8 | G1/8 | 6 | 27 | 8,5 | 14 | |
| 1631 01-1/4 | G1/4 | 8 | 29,5 | 8,5 | 17 | |
| 1631 01-3/8 | G3/8 | 8 | 30 | 8,5 | 19 | |
| 1631 01-1/2 | G1/2 | 9 | 31 | 8,5 | 27 | |

Fittings Mod. 1635 01

Assembly with adjustable fittings Mod. 6610; 6620; 1610; 1620; 2023; 1170.

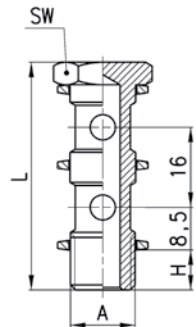
* = models can be assembled with 1/4 banjo fittings.



| DIMENSIONS | | | | | | |
|-------------------------|----------|---|------|------|----|---|
| Mod. | A | H | L | S | SW | |
| 1635 01-1/8 | G1/8 | 6 | 31 | 12,5 | 14 | |
| 1635 01-1/4 | G1/4 | 8 | 33,5 | 12,5 | 17 | |
| 1635 01-3/8 | G3/8 | 8 | 34 | 12,5 | 19 | |
| 1635 01-1/2 | G1/2 | 9 | 35 | 12,5 | 27 | |
| 1635 01-M12x1,25 | M12x1,25 | 8 | 33,5 | 12,5 | 17 | * |
| 1635 01-M12x1,5 | M12x1,5 | 8 | 33,5 | 12,5 | 17 | * |

Fittings Mod. 1631 02

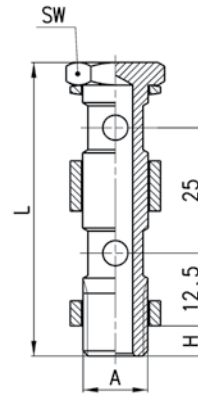
Assembly with adjustable fittings Mod. 6610; 6620; 1610; 1620; 2023; 1170.



| DIMENSIONS | | | | | |
|--------------------|------|---|------|----|--|
| Mod. | A | H | L | SW | |
| 1631 02-1/8 | G1/8 | 6 | 43 | 14 | |
| 1631 02-1/4 | G1/4 | 8 | 45,5 | 17 | |
| 1631 02-3/8 | G3/8 | 8 | 46 | 19 | |

Fittings Mod. 1635 02

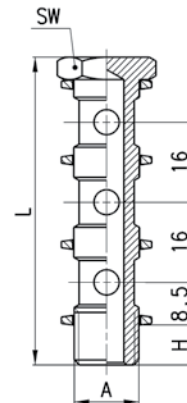
Assembly with adjustable fittings Mod. 6610; 6620; 1610; 1620; 2023; 1170.



| DIMENSIONS | | | | |
|-------------|------|---|------|----|
| Mod. | A | H | L | SW |
| 1635 02-1/8 | G1/8 | 6 | 56 | 14 |
| 1635 02-1/4 | G1/4 | 8 | 58,5 | 17 |
| 1635 02-3/8 | G3/8 | 8 | 59 | 19 |
| 1635 02-1/2 | G1/2 | 9 | 60 | 27 |

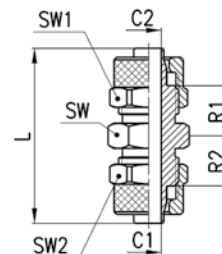
Fittings Mod. 1631 03

Assembly with adjustable fittings Mod. 6610; 6620; 1610; 1620; 2023; 1170.



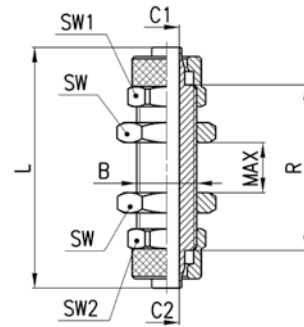
| DIMENSIONS | | | | |
|-------------|------|---|------|----|
| Mod. | A | H | L | SW |
| 1631 03-1/8 | G1/8 | 6 | 59 | 14 |
| 1631 03-1/4 | G1/4 | 8 | 61,5 | 17 |
| 1631 03-3/8 | G3/8 | 8 | 62 | 19 |

Fittings Mod. 1580



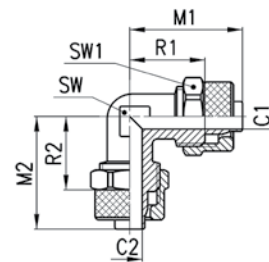
| DIMENSIONS | | | | | | | | | |
|---------------|----------|-----|-----|------|------|------|----|-----|-----|
| Mod. | Tube | C1 | C2 | L | R1 | R2 | SW | SW1 | SW2 |
| 1580 5/3 | 5/3 | 2 | 2 | 28,5 | 7,5 | 7,5 | 8 | 8 | 8 |
| 1580 6/4 | 6/4 | 3 | 3 | 34,5 | 10 | 10 | 12 | 12 | 12 |
| 1580 8/6 | 8/6 | 5 | 5 | 34,5 | 9,75 | 9,75 | 13 | 14 | 14 |
| 1580 10/8 | 10/8 | 6,5 | 6,5 | 38 | 10,5 | 10,5 | 14 | 16 | 16 |
| 1580 12/10 | 12/10 | 8,5 | 8,5 | 41 | 10,5 | 10,5 | 17 | 19 | 19 |
| 1580 15/12,5 | 15/12,5 | 11 | 11 | 45 | 11 | 11 | 22 | 22 | 22 |
| 1580 8/6-6/4 | 8/6-6/4 | 5 | 3 | 34,5 | 9,75 | 9,75 | 13 | 12 | 14 |
| 1580 10/8-6/4 | 10/8-6/4 | 6,5 | 3 | 36,5 | 10,5 | 10 | 14 | 12 | 16 |

Fittings Mod. 1590



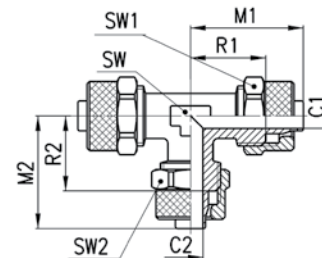
| DIMENSIONS | | | | | | | | | | |
|--------------|---------|---------|-----|-----|----|----|-----|----|-----|-----|
| Mod. | Tube | B | C1 | C2 | L | R | MAX | SW | SW1 | SW2 |
| 1590 5/3 | 5/3 | M7x0,75 | 2 | 2 | 40 | 27 | 9 | 8 | 8 | 8 |
| 1590 6/4 | 6/4 | M10x1 | 3 | 3 | 48 | 33 | 14 | 14 | 12 | 12 |
| 1590 8/6 | 8/6 | M12x1 | 5 | 5 | 48 | 33 | 12 | 17 | 14 | 14 |
| 1590 10/8 | 10/8 | M14x1 | 6,5 | 6,5 | 48 | 31 | 10 | 17 | 16 | 16 |
| 1590 12/10 | 12/10 | M16x1 | 8,5 | 8,5 | 53 | 33 | 10 | 19 | 19 | 19 |
| 1590 6/4-5/3 | 6/4-5/3 | M10x1 | 3 | 2 | 48 | 34 | 14 | 14 | 12 | 12 |
| 1590 8/6-6/4 | 8/6-6/4 | M12x1 | 5 | 3 | 48 | 33 | 12 | 17 | 14 | 14 |

Fittings Mod. 1550



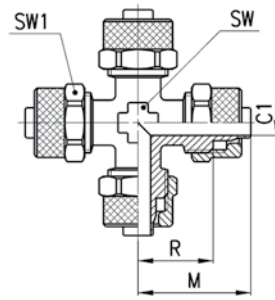
| DIMENSIONS | | | | | | | | | |
|--------------|---------|-----|-----|------|------|------|------|----|-----|
| Mod. | Tube | C1 | C2 | M1 | M2 | R1 | R2 | SW | SW1 |
| 1550 6/4 | 6/4 | 3 | 3 | 22,5 | 22,5 | 15 | 15 | 8 | 12 |
| 1550 8/6 | 8/6 | 5 | 5 | 22,5 | 22,5 | 15 | 15 | 10 | 14 |
| 1550 10/8 | 10/8 | 6,5 | 6,5 | 25,5 | 25,5 | 17 | 17 | 12 | 16 |
| 1550 12/10 | 12/10 | 8,5 | 8,5 | 30 | 30 | 20 | 20 | 14 | 19 |
| 1550 15/12,5 | 15/12,5 | 11 | 11 | 34 | 34 | 22,5 | 22,5 | 16 | 22 |

Fittings Mod. 1540



| DIMENSIONS | | | | | | | | | | |
|---------------|----------|-----|-----|------|------|------|------|----|-----|-----|
| Mod. | Tube | C1 | C2 | M1 | M2 | R1 | R2 | SW | SW1 | SW2 |
| 1540 5/3 | 5/3 | 2 | 2 | 21,5 | 21,5 | 15 | 15 | 8 | 8 | 8 |
| 1540 6/4 | 6/4 | 3 | 3 | 22,5 | 22,5 | 15 | 15 | 8 | 12 | 12 |
| 1540 8/6 | 8/6 | 5 | 5 | 22,5 | 22,5 | 15 | 15 | 10 | 14 | 14 |
| 1540 10/8 | 10/8 | 6,5 | 6,5 | 25,5 | 25,5 | 17 | 17 | 12 | 16 | 16 |
| 1540 12/10 | 12/10 | 8,5 | 8,5 | 30 | 30 | 20 | 20 | 14 | 19 | 19 |
| 1540 15/12,5 | 15/12,5 | 11 | 11 | 34 | 34 | 22,5 | 22,5 | 16 | 22 | 22 |
| 1540 8/6-6/4 | 8/6-6/4 | 5 | 3 | 22,5 | 22,5 | 15 | 15 | 10 | 14 | 12 |
| 1540 10/8-6/4 | 10/8-6/4 | 6,5 | 3 | 25,5 | 23,5 | 17 | 16,5 | 12 | 16 | 12 |
| 1540 10/8-8/6 | 10/8-8/6 | 6,5 | 5 | 25,5 | 24 | 17 | 16,5 | 12 | 16 | 14 |

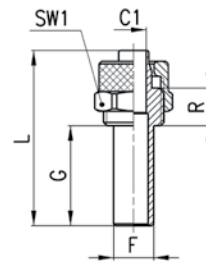
Fittings Mod. 1600



DIMENSIONS

| Mod. | Tube | C1 | M | R | SW | SW1 |
|-----------------|------|----|------|----|----|-----|
| 1600 6/4 | 6/4 | 3 | 22,5 | 15 | 8 | 12 |
| 1600 8/6 | 8/6 | 5 | 22,5 | 15 | 10 | 14 |

Fittings Mod. 1470



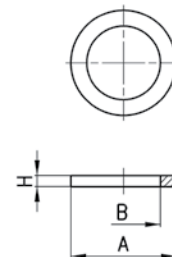
DIMENSIONS

| Mod. | Tube | F | C1 | G | L | R | SW1 |
|-----------------|------|---|----|----|----|-----|-----|
| 1470 6/4 | 6/4 | 6 | 3 | 20 | 35 | 7,5 | 12 |
| 1470 8/6 | 8/6 | 8 | 5 | 20 | 35 | 7,5 | 14 |

Washer Mod. 2651



Material: Aluminium



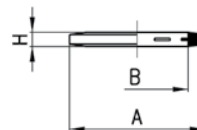
DIMENSIONS

| Mod. | A | B | H |
|-----------------|----|------|-----|
| 2651 1/8 | 14 | 9,8 | 1,5 |
| 2651 1/4 | 18 | 13,2 | 1,5 |
| 2651 3/8 | 22 | 16,7 | 1,5 |
| 2651 1/2 | 26 | 20,9 | 1,5 |

Washer Mod. 2661



Material: plastic

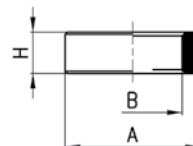


| DIMENSIONS | | | |
|-----------------|-----|------|-----|
| Mod. | A | B | H |
| 2661 M3 | 4,9 | 2,8 | 0,7 |
| 2661 M5 | 8 | 5,2 | 1 |
| 2661 M6 | 9 | 6,2 | 1 |
| 2661 1/8 | 14 | 10,2 | 1,9 |
| 2661 1/4 | 18 | 13,5 | 1,9 |
| 2661 3/8 | 21 | 16,5 | 2,1 |
| 2661 1/2 | 26 | 21,2 | 1,9 |

Washer Mod. 2665

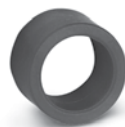


Material: plastic

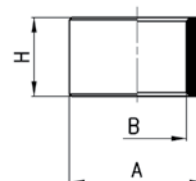


| DIMENSIONS | | | |
|-----------------|----|------|---|
| Mod. | A | B | H |
| 2665 1/8 | 14 | 9,8 | 5 |
| 2665 1/4 | 18 | 13,2 | 5 |
| 2665 3/8 | 21 | 16,8 | 5 |
| 2665 1/2 | 26 | 21,1 | 5 |

Washer Mod. 2669

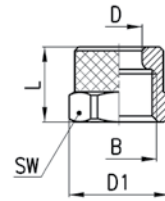


Material: plastic



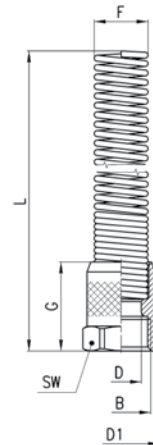
| DIMENSIONS | | | |
|-----------------|----|------|----|
| Mod. | A | B | H |
| 2669 1/8 | 14 | 9,8 | 10 |
| 2669 1/4 | 18 | 13,2 | 10 |
| 2669 3/8 | 21 | 16,8 | 10 |
| 2669 1/2 | 26 | 21,1 | 10 |

Blocking nut Mod. 1703



| DIMENSIONS | | | | | | |
|--------------------|---------|---------|-------|------|------|-----|
| Mod. | Tube | B | D | D1 | L | SW1 |
| 1703 5/3-M7x0,75 | 5/3 | M7x0,75 | 5,1 | 8,8 | 8,5 | 8 |
| 1703 6/4-M8x0,75 | 6/4 | M8x0,75 | 6,1 | 9,8 | 8,5 | 9 |
| 1703 6/4-M10x1 | 6/4 | M10x1 | 6,1 | 13,3 | 10 | 12 |
| 1703 8/6-M12x1 | 8/6 | M12x1 | 8,2 | 15,5 | 10 | 14 |
| 1703 10/8-M14x1 | 10/8 | M14x1 | 10,15 | 17,5 | 13 | 16 |
| 1703 12/10-M16x1 | 12/10 | M16x1 | 12,2 | 21 | 13,5 | 19 |
| 1703 15/12,5-M20x1 | 15/12,5 | M20x1 | 15,2 | 24,5 | 16 | 22 |

Blocking nut Mod. 1703



| DIMENSIONS | | | | | | | | |
|--------------------|---------|-------|------|-------|------|------|------|----|
| Mod. | Tube | B | F | D | D1 | G | L | SW |
| 1723 6/4-M10x1 | 6/4 | M10x1 | 8,9 | 6,1 | 13,3 | 18 | 90,5 | 12 |
| 1723 8/6-M12x1 | 8/6 | M12x1 | 10,9 | 8,2 | 15,5 | 18 | 94,5 | 14 |
| 1723 10/8-M14x1 | 10/8 | M14x1 | 12,5 | 10,15 | 17,5 | 22 | 96,5 | 16 |
| 1723 12/10-M16x1 | 12/10 | M16x1 | 15,5 | 12,2 | 21 | 23,5 | 108 | 19 |
| 1723 15/12,5-M20x1 | 15/12,5 | M20x1 | 18,5 | 15,2 | 24,5 | 28 | 120 | 22 |