

Si32-3



- ▶ Three-stage COAX® cartridge - MIDI - with extra high initial vacuum flow.
- ▶ Large vacuum flow in relation to energy consumption.
- ▶ Suitable for fast evacuation of large volumes when handling porous materials or if surface leakage is present.
- ▶ Efficient generator of blow-air. Recommended for low overpressures (0 - 0.05 MPa).

TECHNICAL DATA

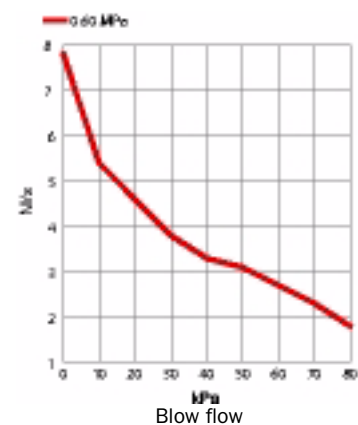
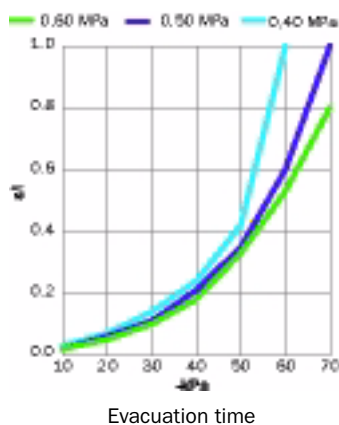
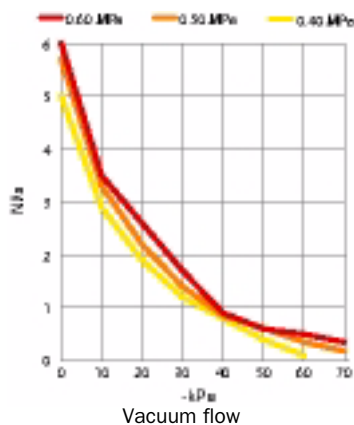
Description	Unit	Value
Feed pressure, max.	MPa	0.7
Temperature range	°C	-10-80
Weight	g	33-70
Material		AI, NBR, PA, SS

VACUUM FLOW

Feed pressure MPa	Air consumption NI/s	Vacuum flow (NI/s) at different vacuum levels (-kPa)									Max vacuum -kPa
		0	10	20	30	40	50	60	70		
0.40	1.25	5.0	2.9	1.9	1.2	0.80	0.40	0.10	—	60	
0.50	1.5	5.7	3.3	2.2	1.4	0.85	0.62	0.35	0.18	70	
0.60	1.75	6.0	3.5	2.6	1.7	0.90	0.60	0.50	0.35	75	

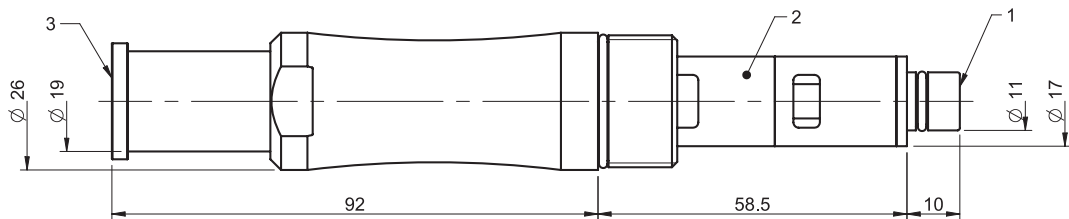
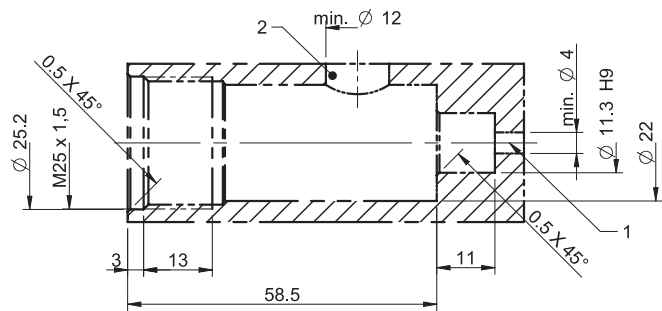
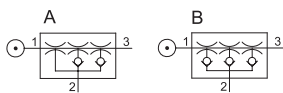
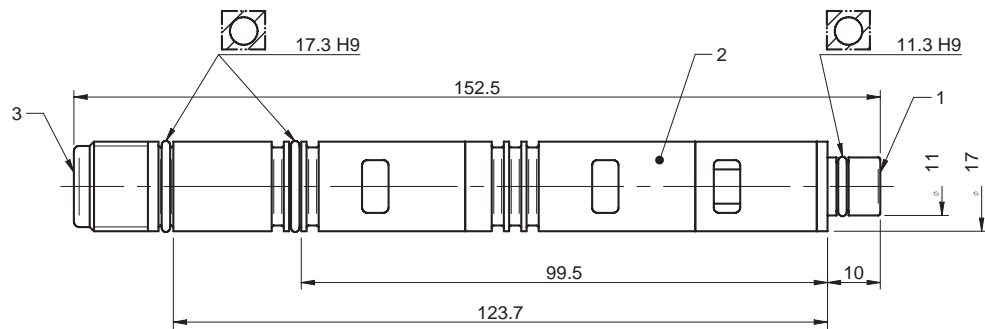
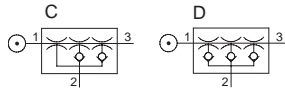
EVACUATION TIME

Feed pressure MPa	Air consumption NI/s	Evacuation time (s/l) to reach different vacuum levels (-kPa)								Max vacuum -kPa
		10	20	30	40	50	60	70		
0.40	1.25	0.030	0.070	0.14	0.24	0.42	1.0	—	60	
0.50	1.5	0.020	0.060	0.11	0.21	0.35	0.60	1.0	70	
0.60	1.75	0.020	0.050	0.10	0.18	0.33	0.53	0.80	75	



ORDERING INFORMATION

Description	Art. No.
C COAX® cartridge MIDI Si32-3	0107053
A COAX® cartridge MIDI Si32-3, holding cap	0107128
D COAX® cartridge MIDI Si32-3, extra non-return valve	0107713
B COAX® cartridge MIDI Si32-3, holding cap, extra non-return valve	0107715



ORDERING INFORMATION, ACCESSORIES

Description	Art. No.
Silencer COAX® MIDI	0111976