

Pi12-3



- ▶ Three-stage COAX® cartridge - MINI - with high initial vacuum flow.
- ▶ Vacuum level to 90 -kPa at low feed pressure.
- ▶ High system reliability in case of fluctuating or low feed pressure.
- ▶ Suitable for handling sealed objects with high pick-up speed.

TECHNICAL DATA

Description	Unit	Value
Feed pressure, max.	MPa	0.7
Temperature range	°C	-10-80
Weight	g	4.7-12.5
Material		Al, NBR, PA, SS

VACUUM FLOW

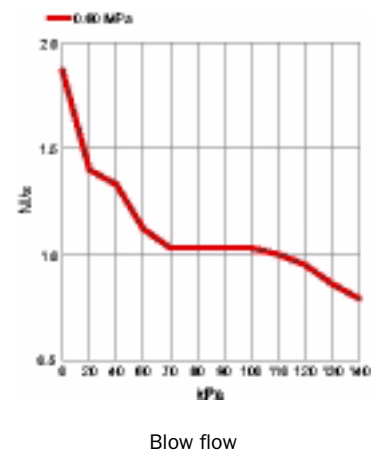
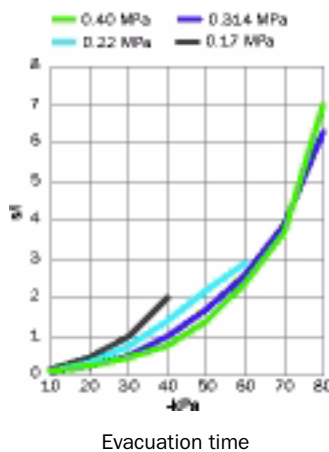
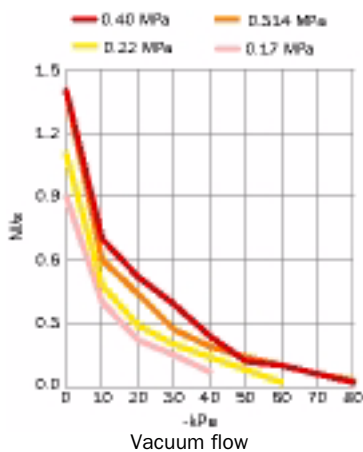
Feed pressure MPa	Air consumption NI/s	Vacuum flow (NI/s) at different vacuum levels (-kPa)										Max vacuum -kPa
		0	10	20	30	40	50	60	70	80		
0.17	0.29	0.90	0.40	0.22	0.15	0.07	—	—	—	—	—	49
0.22	0.34	1.10	0.48	0.29	0.20	0.14	0.08	0.02	—	—	—	64
0.314	0.44	1.40	0.60	0.44	0.27	0.19	0.14	0.10	0.06	0.03	—	90
0.40	0.53	1.40	0.70	0.52	0.39	0.24	0.12	0.10	0.06	0.02	—	84

EVACUATION TIME

Feed pressure MPa	Air consumption NI/s	Evacuation time (s/l) to reach different vacuum levels (-kPa)									Max vacuum -kPa
		10	20	30	40	50	60	70	80		
0.17	0.29	0.15	0.46	1.00	2.00	—	—	—	—	—	49
0.22	0.34	0.10	0.32	0.75	1.40	2.20	2.90	—	—	—	64
0.314	0.44	0.08	0.23	0.49	1.00	1.70	2.60	3.90	6.30	—	90
0.40	0.53	0.09	0.24	0.45	0.76	1.40	2.40	3.70	7.00	—	84

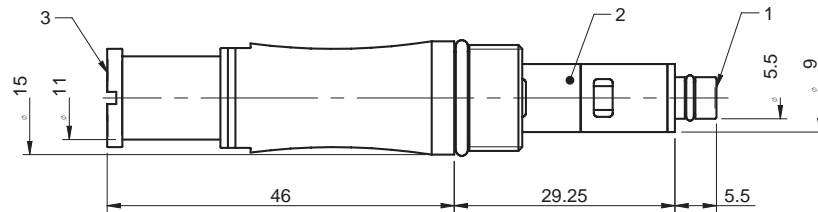
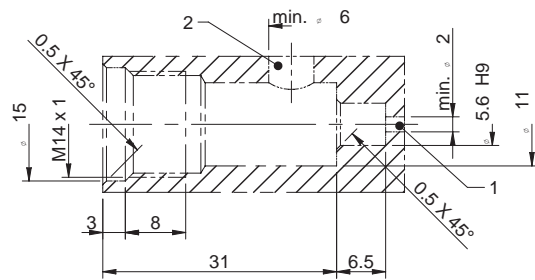
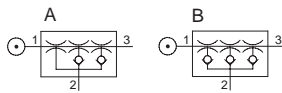
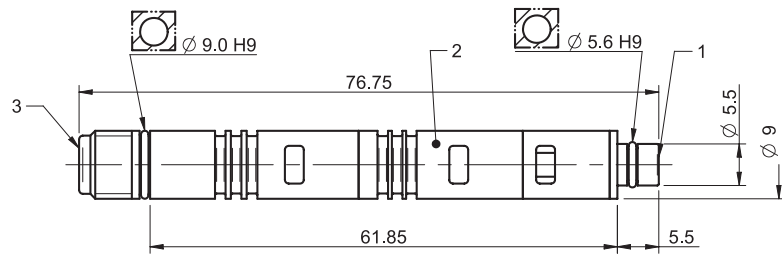
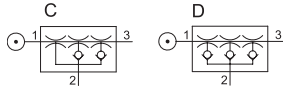
BLOW FLOW

Feed pressure MPa	Air consumption NI/s	Blow flow (NI/s) at different pressure levels (kPa)												Max pressure kPa
		0	20	40	60	70	80	90	100	110	120	130	140	
0.6	0.75	1.8	1.7	1.3	1.1	1.03	1.03	1.03	1.03	1.0	0.95	0.86	0.79	140



ORDERING INFORMATION

Description	Art. No.
C COAX® cartridge MINI Pi12-3	0106895
A COAX® cartridge MINI Pi12-3, holding cap	0106923
D COAX® cartridge MINI Pi12-3, extra non-return valve	0106956
B COAX® cartridge MINI Pi12-3, holding cap, extra non-return valve	0106957



ORDERING INFORMATION, ACCESSORIES

Description	Art. No.
Silencer COAX® MINI	0111977
Exhaust adapter	0106344

COAX® cartridge MINI