

Xi10-3



- ▶ Three-stage COAX® cartridge – MINI.
- ▶ High vacuum flow at deep vacuum levels to 94 - kPa.
- ▶ Quick response time when deep vacuum is needed.
- ▶ Suitable for handling sealed objects with high pick-up speed.
- ▶ Large vacuum flow in relation to energy consumption

TECHNICAL DATA

Description	Unit	Value
Feed pressure, max.	MPa	0.7
Temperature range	°C	-10-80
Weight	g	4.7-12.5
Material		Al, NBR, PA, SS

VACUUM FLOW

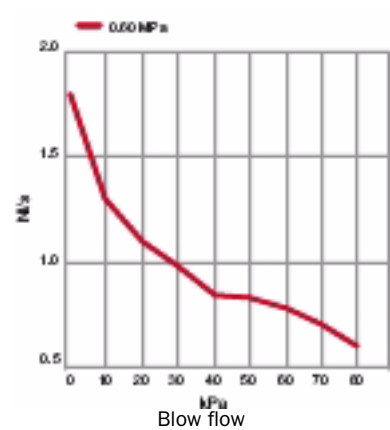
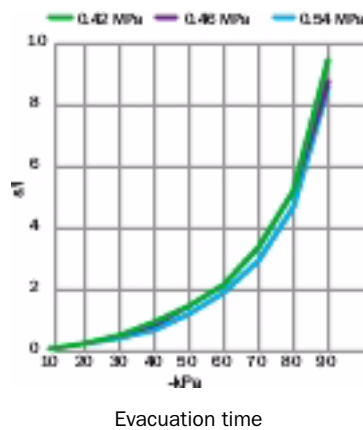
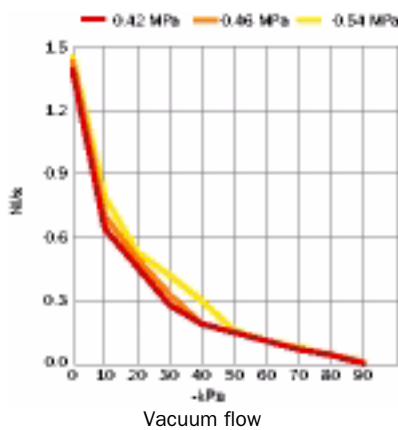
Feed pressure MPa	Air consumption NI/s	Vacuum flow (NI/s) at different vacuum levels (-kPa)											Max vacuum -kPa
		0	10	20	30	40	50	60	70	80	90		
0.45	0.42	1.39	0.64	0.46	0.28	0.19	0.15	0.11	0.07	0.043	0.003	92	
0.5	0.46	1.43	0.70	0.50	0.33	0.19	0.15	0.11	0.07	0.045	0.011	94	
0.6	0.54	1.45	0.79	0.53	0.42	0.30	0.16	0.11	0.08	0.041	0.010	93	

EVACUATION TIME

Feed pressure MPa	Air consumption NI/s	Evacuation time (s/l) to reach different vacuum levels (-kPa)										Max vacuum -kPa
		10	20	30	40	50	60	70	80	90		
0.45	0.42	0.1	0.28	0.55	1.0	1.5	2.2	3.4	5.2	9.5	92	
0.5	0.46	0.09	0.26	0.50	0.90	1.5	2.2	3.4	5.2	8.8	94	
0.6	0.54	0.09	0.24	0.45	0.70	1.2	1.9	3.0	4.7	8.6	93	

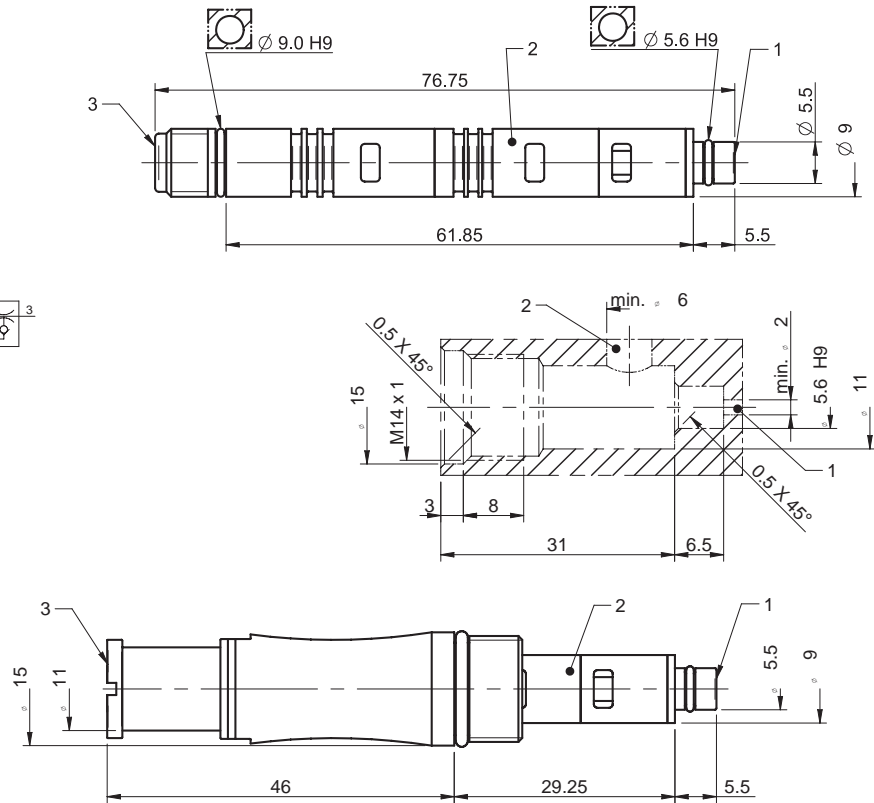
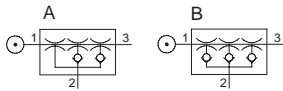
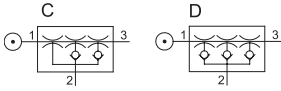
BLOW FLOW

Feed pressure MPa	Air consumption NI/s	Blow flow (NI/s) at different pressure levels (kPa)										Max pressure kPa
		0	10	20	30	40	50	60	70	80		
0.6	0.54	1.8	1.3	1.1	0.98	0.85	0.84	0.79	0.71	0.61	90	



ORDERING INFORMATION

Description	Art. No.
C COAX® cartridge MINI Xi10-3	0120286
A COAX® cartridge MINI Xi10-3, holding cap	0120299
D COAX® cartridge MINI Xi10-3, extra non-return valve	0120289
B COAX® cartridge MINI Xi10-3, holding cap, extra non-return valve	0120298



COAX® cartridge MINI

ORDERING INFORMATION, ACCESSORIES

Description	Art. No.
Silencer COAX® MINI	0111977