

X40L



- ▶ Extra vacuum level to 93 -kPa
- ▶ Small size and low weight
- ▶ Use in tightly sealed or non-porous applications

Supplied with two through-flow silencers.

TECHNICAL DATA

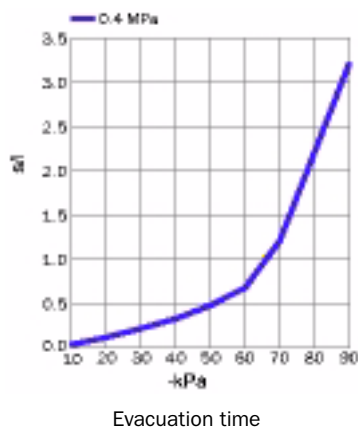
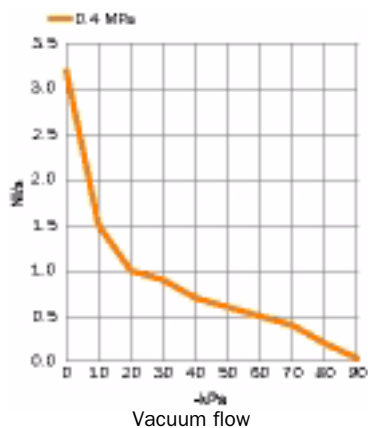
Description	Unit	Value
Feed pressure, max.	MPa	0.7
Noise level	dBA	60-70
Temperature range	°C	-20-80
Weight	g	420
Material		Al, PA, POM, NBR, SS, ABS

VACUUM FLOW

Feed pressure MPa	Air consumption NI/s	Vacuum flow (NI/s) at different vacuum levels (-kPa)										Max vacuum -kPa
		0	10	20	30	40	50	60	70	80	90	
0.40	3.1	3.2	1.5	1.0	0.90	0.70	0.60	0.50	0.40	0.17	0.038	93

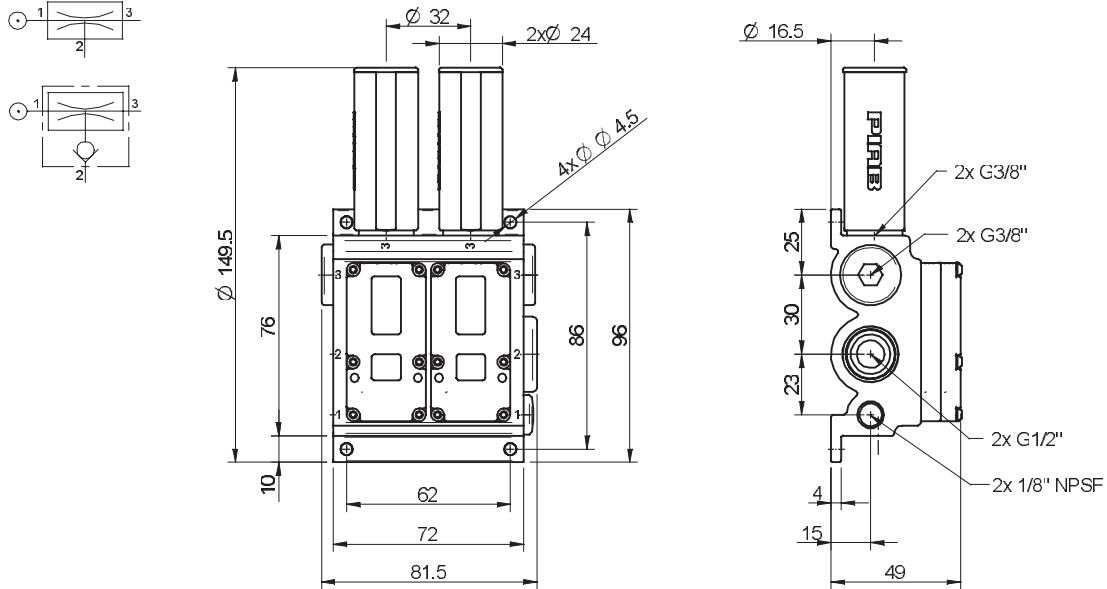
EVACUATION TIME

Feed pressure MPa	Air consumption NI/s	Evacuation time (s/l) to reach different vacuum levels (-kPa)										Max vacuum -kPa
		10	20	30	40	50	60	70	80	90		
0.40	3.1	0.038	0.12	0.22	0.33	0.48	0.68	1.2	2.2	3.2	93	



ORDERING INFORMATION

Description	Art. No.
Vacuum pump MINI X40L, conn. K, NBR sealings	0100423
Vacuum pump MINI X40L, conn. K, NBR sealings, non-return valve	0100425



ORDERING INFORMATION, ACCESSORIES

Description	Art. No.
Sealing kit MINI 30–60, NBR	0100491
Sealing kit MINI 30–60, Viton®	0100491V

Sealing kits include flap valves, gaskets and compressed air filters.

Vacuum pumps
MINI