

VGS™3040



- ▶ COAX® cartridge integrated.
- ▶ Available in lock pin 16, 19 or ball joint mountings, industry standard.
- ▶ Available with level compensator to compensate for differences in level of object.

TECHNICAL DATA

Description	Unit	Value
Feed pressure, max.	MPa	0.7
Noise level, range	dBA	65-74
Material		Al, NBR, PA, Steel
Temperature range	°C	-10-80
Weight, range	g	204-264

VACUUM FLOW

COAX® cartridge	Feed pressure MPa	Air consumption NI/s	Vacuum flow (NI/s) at different vacuum levels (-kPa)											Max vacuum -kPa
			0	10	20	30	40	50	60	70	80	90		
Si08-2	0.60	0.44	0.77	0.67	0.51	0.33	0.23	0.16	0.12	0.08	—	—	75	
Si08-3	0.60	0.44	1.34	0.73	0.55	0.35	0.23	0.17	0.13	0.08	—	—	75	
Xi10-2	0.50	0.46	0.75	0.63	0.49	0.33	0.19	0.15	0.11	0.07	0.05	0.011	94	
Xi10-3	0.50	0.46	1.43	0.70	0.50	0.33	0.19	0.15	0.11	0.07	0.05	0.011	94	
Pi12-2	0.314	0.44	0.68	0.60	0.44	0.27	0.19	0.14	0.10	0.06	0.03	—	90	
Pi12-3	0.314	0.44	1.40	0.60	0.44	0.27	0.19	0.14	0.10	0.06	0.03	—	90	

EVACUATION TIME

COAX® cartridge	Feed pressure MPa	Air consumption NI/s	Evacuation time (s/l) to reach different vacuum levels (-kPa)										Max vacuum -kPa
			10	20	30	40	50	60	70	80	90		
Si08-2	0.60	0.44	0.14	0.31	0.55	0.90	1.40	2.10	3.10	—	—	75	
Si08-3	0.60	0.44	0.10	0.25	0.48	0.80	1.30	2.00	2.90	—	—	75	
Xi10-2	0.50	0.46	0.14	0.30	0.60	1.00	1.60	2.30	3.50	5.30	8.90	94	
Xi10-3	0.50	0.46	0.09	0.26	0.50	0.80	1.50	2.20	3.40	5.20	8.80	94	
Pi12-2	0.314	0.44	0.17	0.32	0.58	1.10	1.80	2.70	4.00	6.40	—	90	
Pi12-3	0.314	0.44	0.08	0.23	0.49	1.00	1.70	2.60	3.90	6.30	—	90	

For performance graphs, see COAX® cartridge data sheets.

ORDERING INFORMATION

1. Housing	VGS Code
Housing Left hand	00
Housing Right hand	01

2. COAX® cartridge	VGS Code
COAX® cartridge MINI Pi12-2	AB
COAX® cartridge MINI Pi12-3	AC
COAX® cartridge MINI Pi12-2, non-return valve	AD
COAX® cartridge MINI Pi12-3, non-return valve	AE
COAX® cartridge MINI Si08-2	AF
COAX® cartridge MINI Si08-3	AG
COAX® cartridge MINI Si08-3, non-return valve	AI
COAX® cartridge MINI Si08-2, non-return valve	AH
COAX® cartridge MINI Xi10-2	AJ

2. COAX® cartridge		VGS Code
COAX® cartridge MINI Xi10-3		AK
COAX® cartridge MINI Xi10-2, non-return valve		AL
COAX® cartridge MINI Xi10-3, non-return valve		AM

3. Mounting style		VGS Code
No mounting style		00
P Mounting Lock pin 16 mm		01
C Mounting Lock pin 19 mm		02
I Mounting Ball joint		03
P Mounting Lock pin 16 mm level compensator		04
C Mounting Lock pin 19 mm level compensator		05
I Mounting Ball joint level compensator		06
Mounting Extrusion mount level compensator		07
Mounting Profile mount		08

For detailed information on level compensator and Profile mount, see separate datasheets.

4. Energy saving		VGS Code
No energy saving		AA
Energy saving Vacustat 65 -kPa		AB
Energy saving Vacustat, Adjustable (factory set at 45 -kPa)		AC

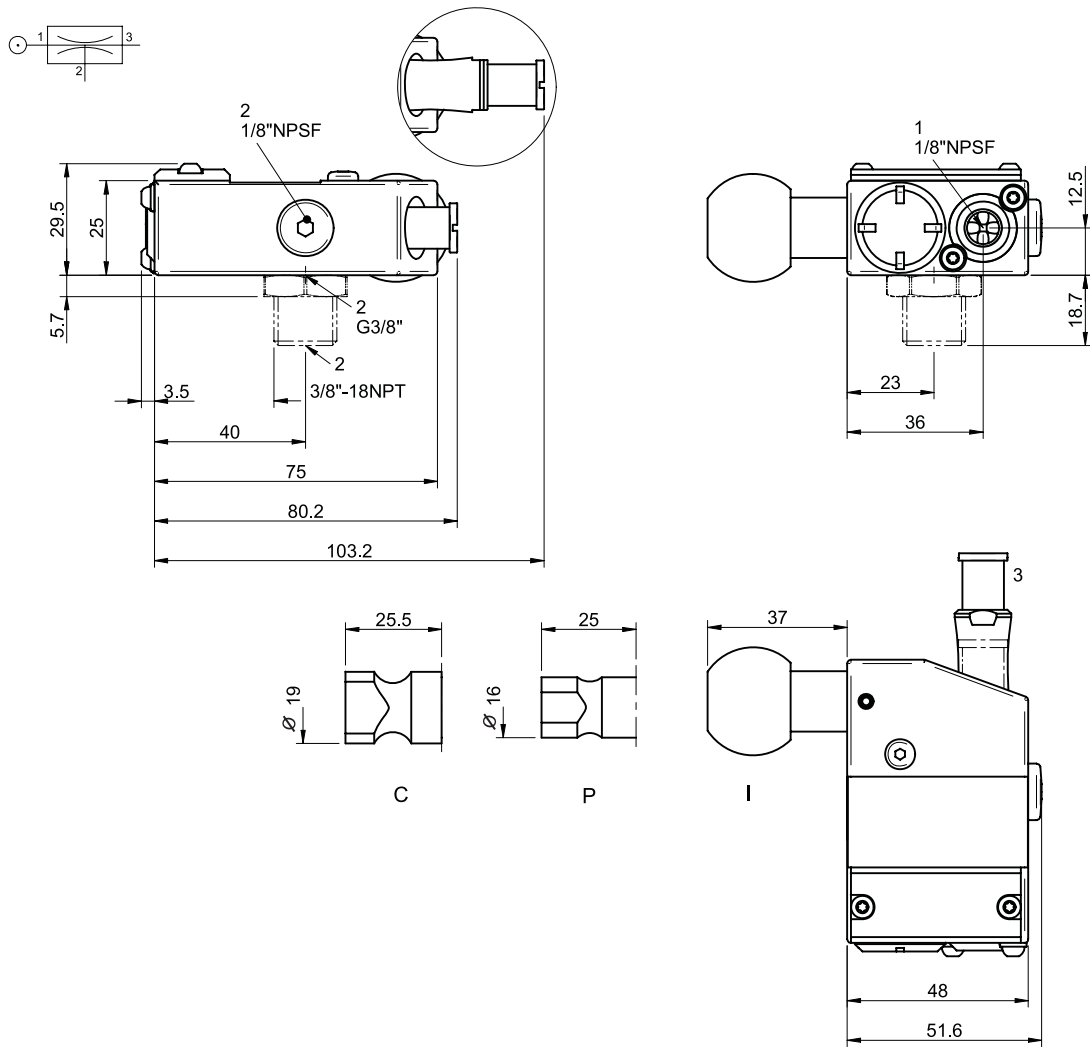
For detailed information on Vacustat, see separate datasheet.

5. Release function		VGS Code
Release Blow-off		01
Release AQR 02 internal		02
Release AQR 02 external		03

For detailed information on Blow-off and AQR 02, see separate datasheets.

6. Vacuum connection		VGS Code
G3/8" female		AA
G3/8" male - 3/8" NPT male adapter		AB

Example	Ordering number
VGS™3040 with left hand housing, COAX® cartridge MINI Pi 12-2, mounting lock pin 16mm, no energy saving, release blow-off, G3/8" female vacuum connection	VGS3040 00 AB 01 AA 01 AA



All drawings are of left-handed tooling.