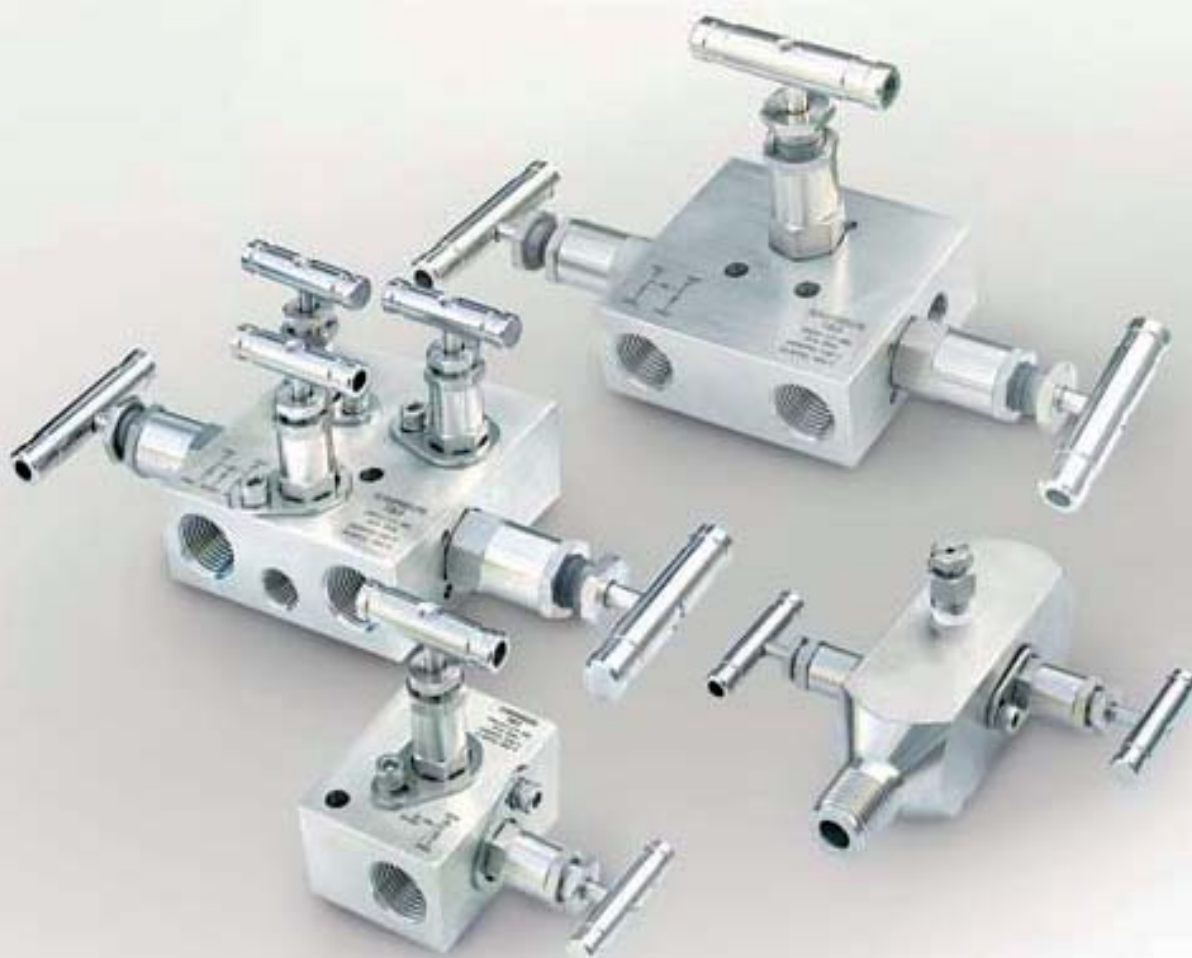
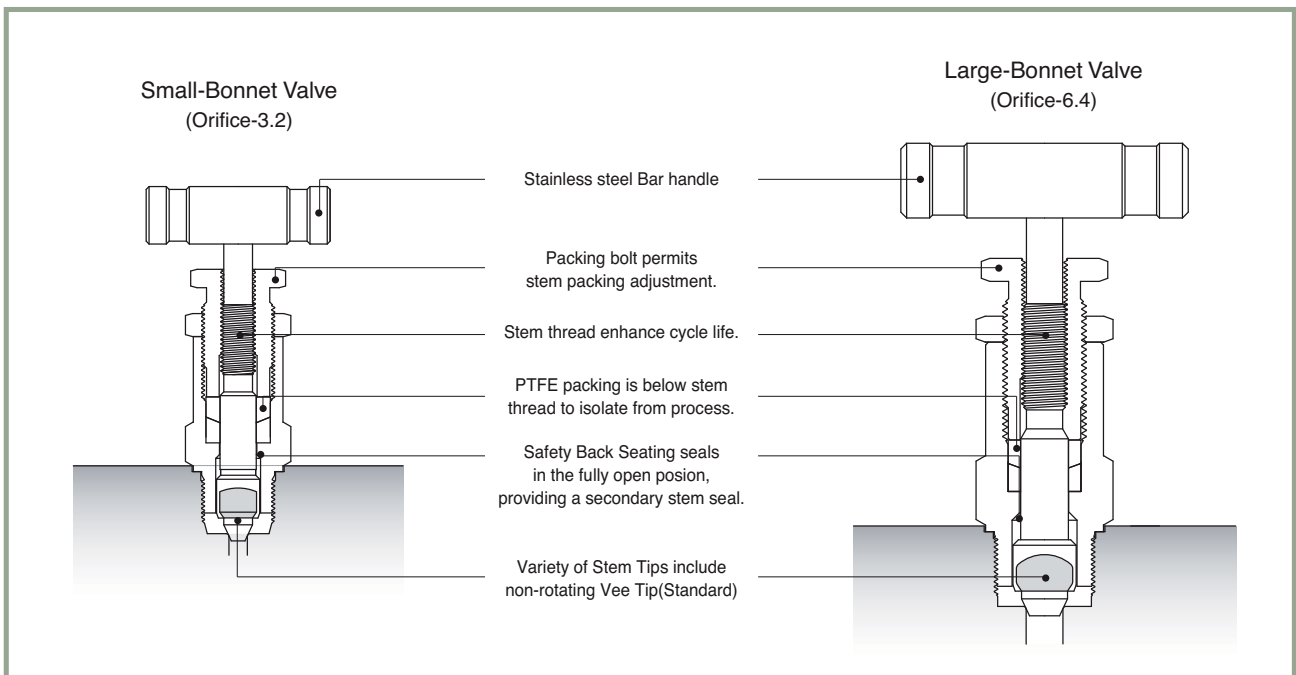




# Instrument Manifolds

High Technology Valve & Fitting Series





## Technical Data

### Packing and Body Material

Packing Material	Body Material	Temperature Rating	Pressure Rating @100 °F(37 °C)
PTFE	SS 316	-65°F ~ 450°C (-53°C ~ 232°C)	6000 PSIG
Grafoil(Option)		-65°F ~ 1200°F (-53°C ~ 648°C)	

### Orifice

3.2mm (0.125 in.)	2-Valve Manifolds Block, Bleed Valve 5-Valve Manifolds Equalizer, Bleed Valve
6.4mm (0.250 in.)	3-Valve Manifolds Block, Equalizer Valve 5-Valve Manifolds Block Valve

### Features

- 2-,3-,and 5-valves Instrument manifolds valves.
- Pressure Rating up to 6000psig (413bar) @ 100°F(37 °C)
- Temperature up to 1200°F(648 °C) with optional Grafoil packing
- All 316 stainless steel construction with PTFE packing.

### Testing

Each valve on every manifold is factory tested with nitrogen gas. The test is performed to a maximum allowable leak rate of 0.1 scc/min.

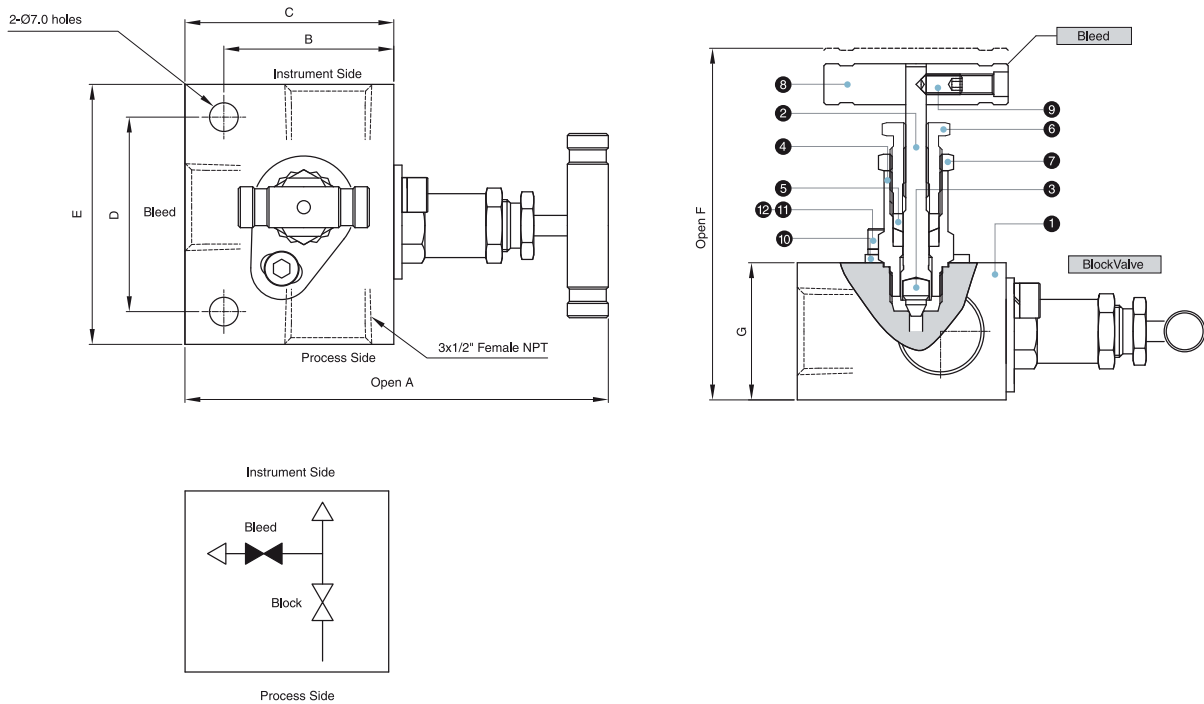
### Pressure-Temperature Rating

Body Material	SS 316	
	Packing Material	Grafoil
Temperature(°C)	Working Pressure psig(bar)	
	-65 (-53) to 100(37)	6000 (413)
200 (93)	5160 (355)	5160 (355)
250 (121)	4910 (338)	4910 (338)
300 (148)	4660 (321)	4660 (321)
350 (176)	4470 (307)	4470 (307)
400 (204)	4280 (294)	4280 (294)
450 (232)	4130 (284)	4130 (284)
500 (260)	-	3980 (274)
550 (287)	-	3870 (266)
600 (315)	-	3760 (259)
650 (343)	-	3700 (254)
700 (371)	-	3600 (248)
750 (398)	-	3520 (242)
800 (426)	-	3460 (235)
850 (454)	-	3380 (232)
900 (482)	-	3280 (225)
950 (510)	-	3220 (221)
1000 (537)	-	3030 (208)
1050 (565)	-	3000 (206)
1100 (593)	-	2685 (184)
1150 (621)	-	2285 (157)
1200 (648)	-	1715 (118)

\* Note  
450°F(232°C) with standard PTFE packing.  
1200°F(648°C) with Optional Grafoil packing.

## 2-Valve Manifolds

### Horizontal Style (Remote Mounting)



### Material of Construction

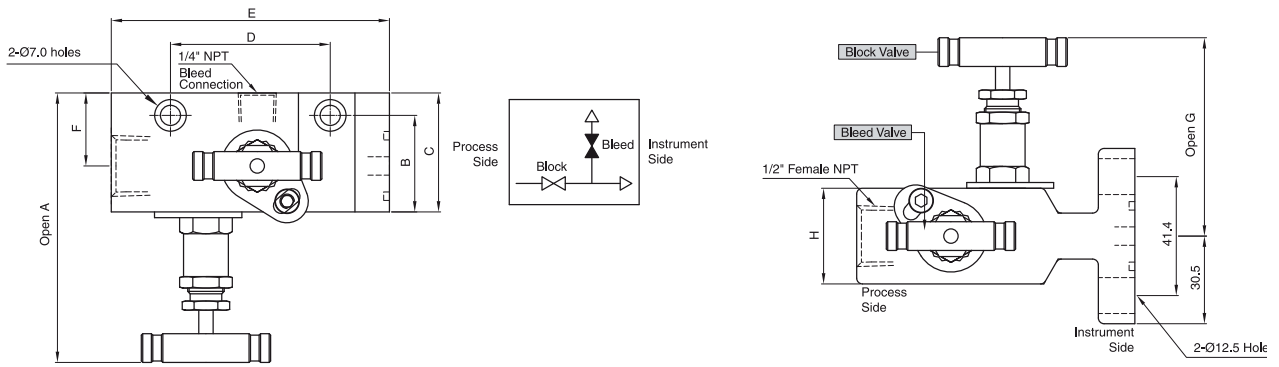
Component	Material Grade	Component	Material Grade
1 Body	SS316	7 Lock Nut	SS316
2 Stem	SS316	8 Handle	SS316
3 Vee Tip	SS316	9 Set Screw	Stainless Steel
4 Bonnet	SS316	10 Locking Plate	Stainless Steel
5 Packing	PTFE	11 Wrench Bolt	Stainless Steel
	Grafoil (optional)	12 Spring Washer	Stainless Steel
6 Packing Bolt	SS316		

Ordering No.	End Connections			Weight Dimensions (mm)						
	Process	Instrument	Bleed	A	B	C	D	E	F	G
LOK-SM2V-F-8N	1/2" Female NPT			103.5	41.5	51	47.5	63.5	85.9	33.5

\* To order a manifold with optional Grafoil packing, add-G to the manifold ordering number.

## 2-Valve Manifolds

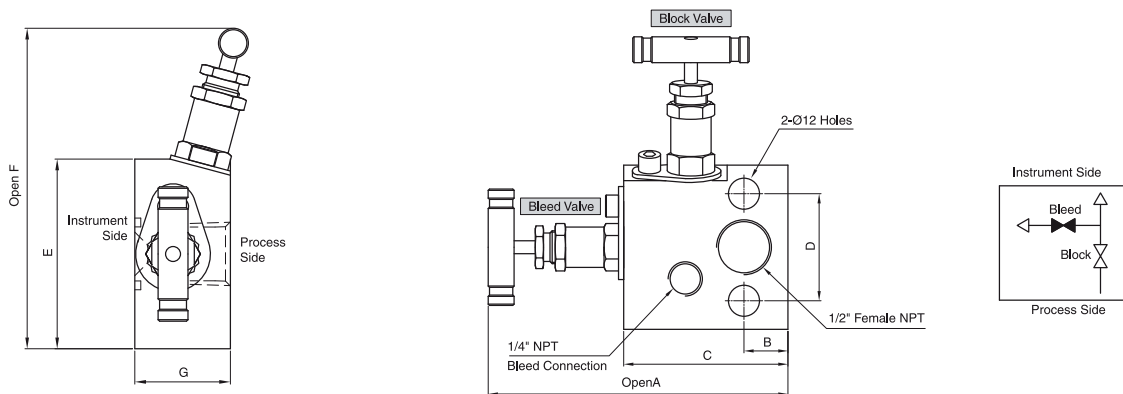
### Horizontal Single Flange Style (Direct Mounting)



Ordering No.	End Connections			Weight Dimensions (mm)							
	Process	Instrument	Bleed	A	B	C	D	E	F	G	H
LOK-SM2VF-F-8N	1/2" Female NPT	Flange(MSS)	1/4" Female NPT	93.8	33.6	41.4	55.6	96.8	25.4	69.0	33.3

\* To order a manifold with optional Grafoil packing, add-G to the manifold ordering number.

### Vertical Style (Direct Mounting)

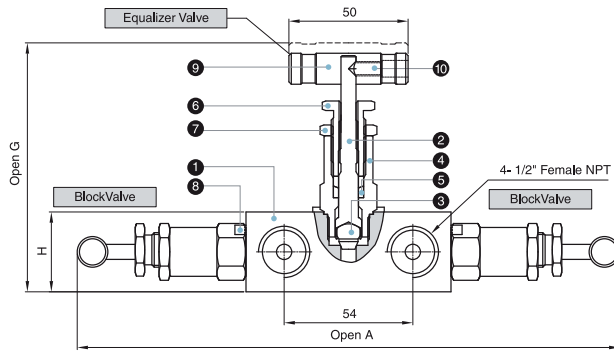
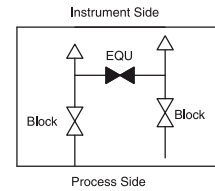
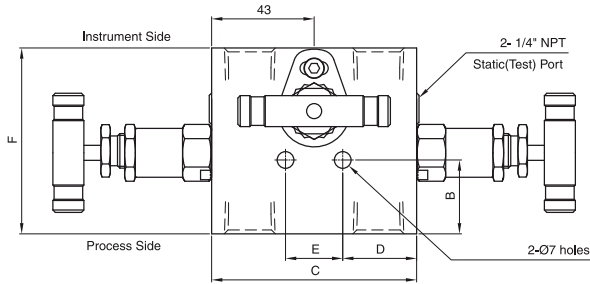


Ordering No.	End Connections			Weight Dimensions (mm)						
	Process	Instrument	Bleed	A	B	C	D	E	F	G
LOK-SM2VD-F-8N	1/2" Female NPT	Flange(MSS)	1/4" Female NPT	116.0	17.0	63.0	41.4	63.5	115.0	32.0

\* To order a manifold with optional Grafoil packing, add-G to the manifold ordering number.

## 3-Valve Manifolds

### Horizontal Style (Remote Mounting)



#### Material of Construction

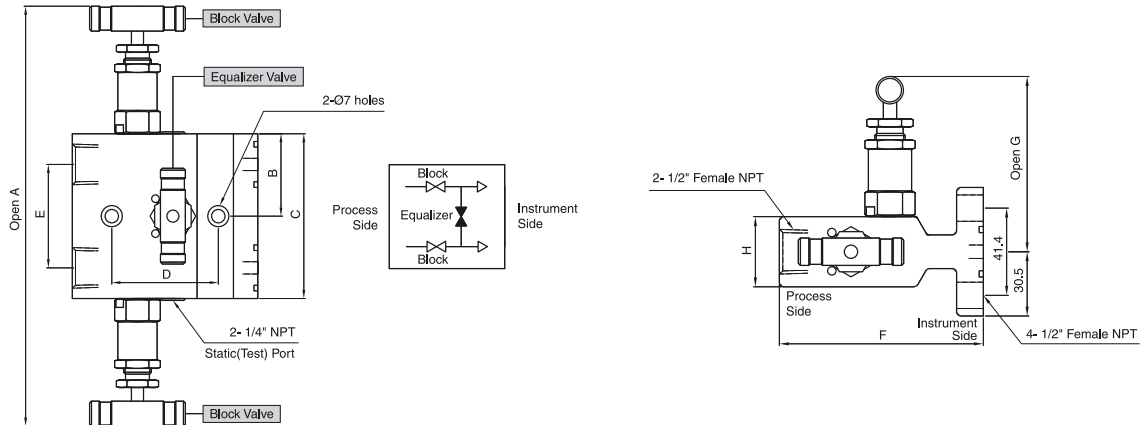
Component	Material Grade	Component	Material Grade
1 Body	SS316	6 Packing Bolt	SS316
2 Stem	SS316	7 Lock Nut	SS316
3 Vee Tip	SS316	8 Stop Pin	Stainless Steel
4 Bonnet	SS316	9 Handle	Stainless Steel
5 Packing	PTFE	10 Set Screw	Stainless Steel
	Grafoil (optional)		

Ordering No.	End Connections		Weight Dimensions (mm)							
	Process	Instrument	A	B	C	D	E	F	G	H
LOK- SM3V-F-8N	1/2" Female NPT		228.0	31.0	86.0	31.0	24.0	78.0	104.5	33.5

\* To order a manifold with optional Grafoil packing, add-G to the manifold ordering number.

## 3-Valve Manifolds

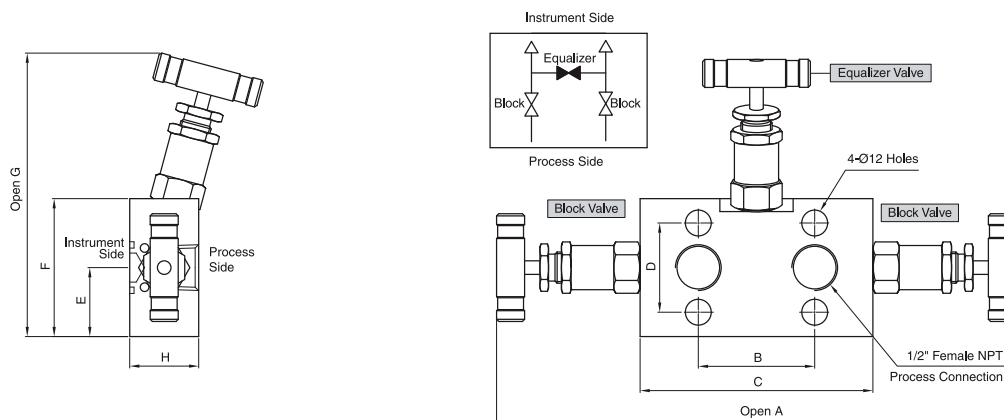
### Horizontal Single Flange Style (Direct Mounting)



Ordering No.	End Connections		Weight Dimensions (mm)							
	Process	Instrument	A	B	C	D	E	F	G	H
LOK- SM3VF-F-8N	1/2" Female NPT	Flange(MSS)	228.0	43.0	86.0	55.6	54.0	96.8	87.7	33.3

\* To order a manifold with optional Grafoil packing, add-G to the manifold ordering number.

### Vertical Style (Direct Mounting)

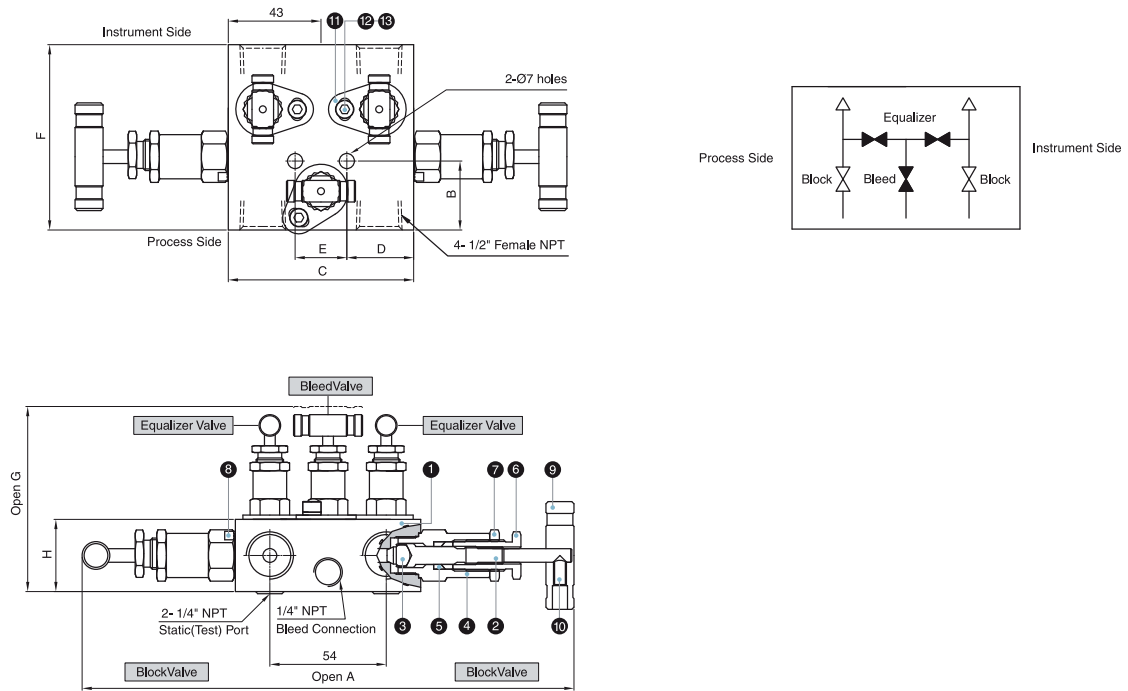


Ordering No.	End Connections		Weight Dimensions (mm)							
	Process	Instrument	A	B	C	D	E	F	G	H
LOK- SM3VD-F-8N	1/2" Female NPT	Flange(MSS)	250.0	54.0	108.0	41.4	32.0	64.0	136.0	32.0

\* To order a manifold with optional Grafoil packing, add-G to the manifold ordering number.

## 5-Valve Manifolds

### Horizontal Style (Remote Mounting)



#### Material of Construction

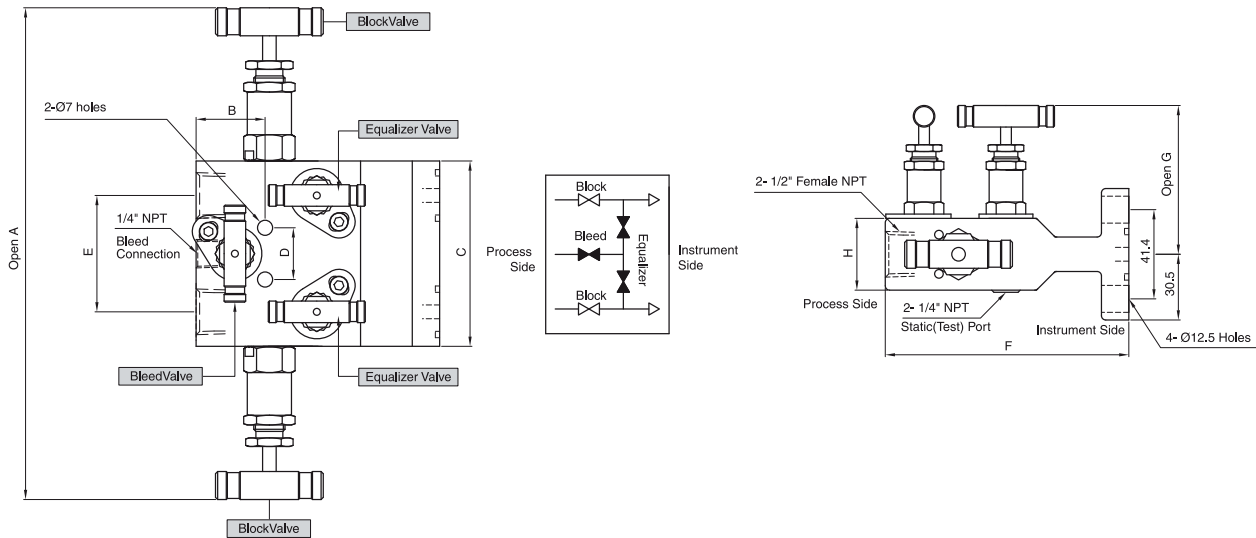
Component	Material Grade	Component	Material Grade
1 Body	SS316	7 Lock Nut	SS316
2 Stem	SS316	8 Stop Pin	Stainless Steel
3 Vee Tip	SS316	9 Handle	SS316
4 Bonnet	SS316	10 Set Screw	Stainless Steel
5 Packing	PTFE	11 Locking Plate	Stainless Steel
	Grafoil (optional)	12 Wrench Bolt	Stainless Steel
6 Packing Bolt	SS316	13 Spring Washer	Stainless Steel

Ordering No.	End Connections			Weight Dimensions (mm)							
	Process	Instrument	Bleed	A	B	C	D	E	F	G	H
LOK-SM5V-F-8N	1/2" Female NPT		1/4" Female NPT	228.0	32.0	86.0	31.0	24.0	86.0	85.9	33.5

\* To order a manifold with optional Grafoil packing, add-G to the manifold ordering number.

## 5-Valve Manifolds

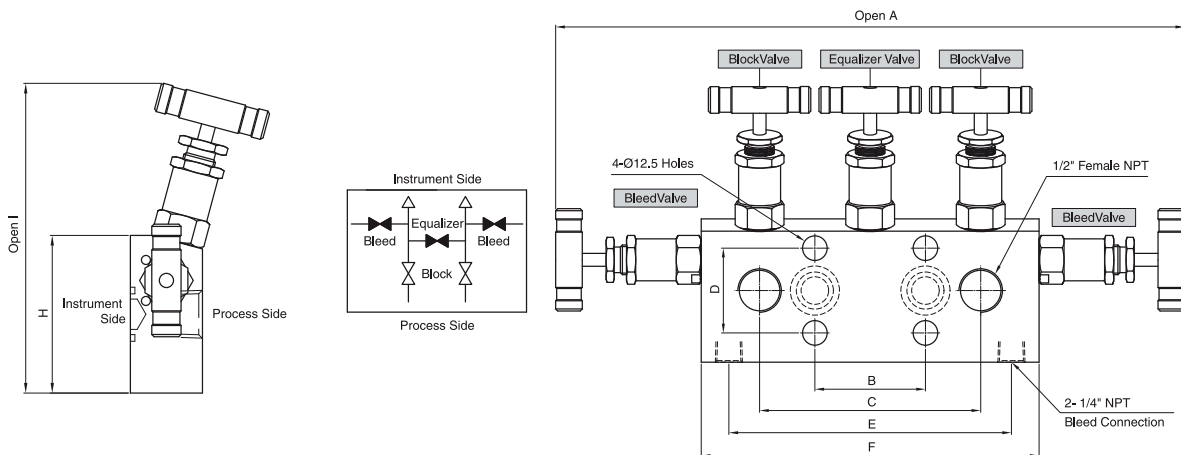
### Horizontal Single Flange Style (Direct Mounting)



Ordering No.	End Connections			Weight Dimensions (mm)							
	Process	Instrument	Bleed	A	B	C	D	E	F	G	H
LOK-SM5VF-F-8N	1/2" Female NPT	Flange(MSS)	1/4" Female NPT	228.0	32.0	86.0	24.0	54.0	113.0	69.0	33.3

\* To order a manifold with optional Grafoil packing, add-G to the manifold ordering number.

### Vertical Style (Direct Mounting)



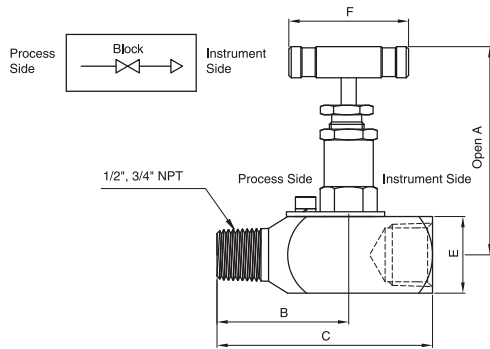
Ordering No.	End Connections			Weight Dimensions (mm)								
	Process	Instrument	Bleed	A	B	C	D	E	F	G	H	I
LOK-SM5VD-F-8N	1/2" Female NPT	Flange(MSS)	1/4" Female NPT	312.0	54.0	108.0	41.4	138.0	165.0	70.0	142.0	32.0

\* To order a manifold with optional Grafoil packing, add-G to the manifold ordering number.

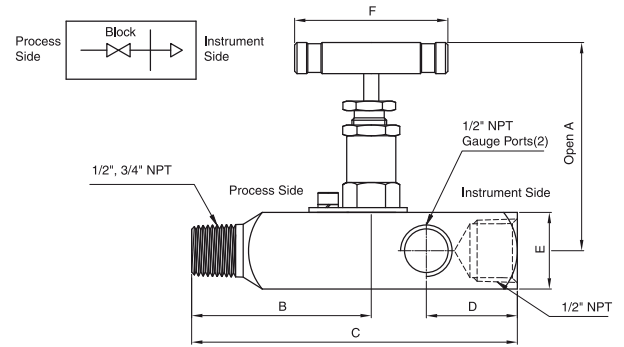


## Gauge / Root Valve

### SGBV(Gauge Valve)



### SGRV(Gauge Root Valve)

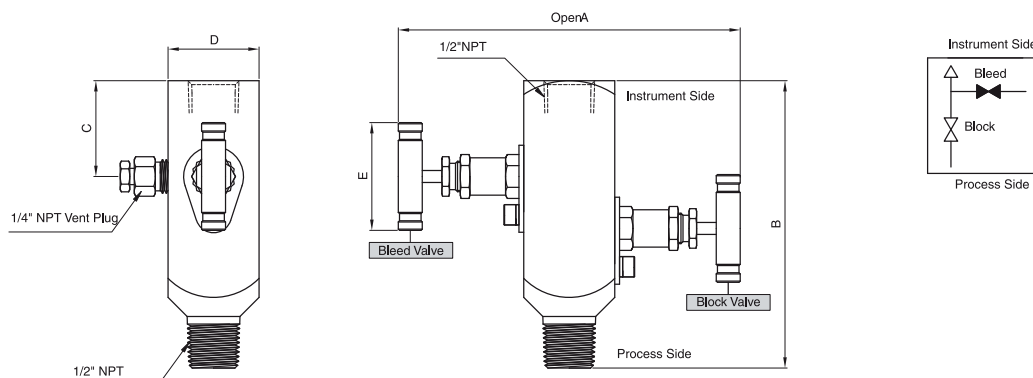


Ordering No.	End Connections		Dimensions (mm)					
	Process	Instrument	A	B	C	D	E	F
LOK-SGBV-MF-8N	1/2" Male NPT	1/2" Female NPT	87	75	136	38	32	64
LOK-SGBV-MF-12N8N	3/4" Male NPT	1/2" Female NPT						
LOK-SGRV-MF-8N	1/2" Male NPT	1/2" Female NPT	87	123	184	38	32	64
LOK-SGRV-MF-12N8N	3/4" Male NPT	1/2" Female NPT						

\* To order a manifold with optional Grafoil packing, add-G to the manifold ordering number.

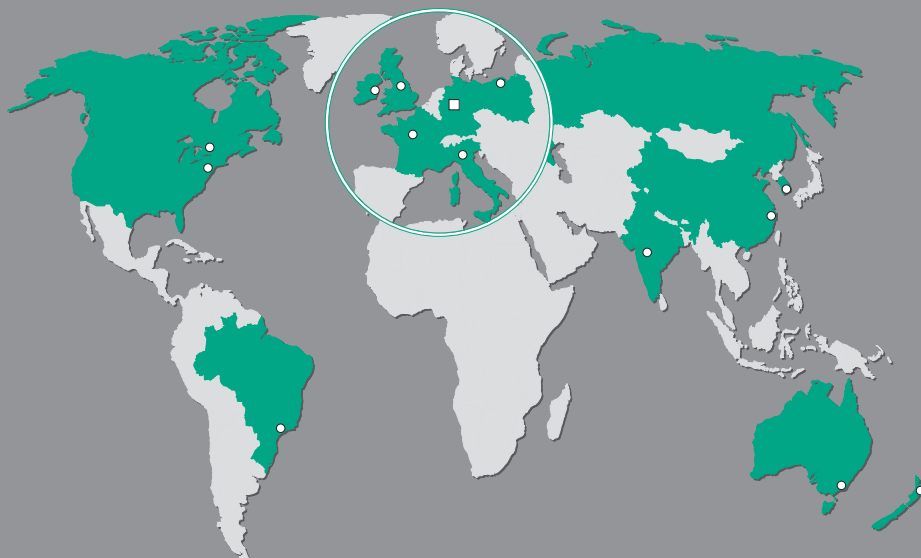
## Gauge 2-Valve

### SGBV 2



Ordering No.	End Connections		Dimensions (mm)				
	Process	Instrument	A	B	C	D	E
LOK-SGBV2-MF-8N	1/2" Male NPT	1/2" Female NPT	142	120	40	38	45

\* To order a manifold with optional Grafoil packing, add-G to the manifold ordering number.


**AUSTRALIA**

STAUFF Corporation Pty. Ltd.  
P. O. Box 227  
Unanderra, NSW, 2526  
24-26 Doyle Avenue  
Unanderra, Wollongong, NSW, 2526  
Tel.: +61 2 4271 18 77  
Fax: +61 2 4271 84 32  
sales@stauff.com.au

**BRAZIL**

STAUFF Brasil Ltda.  
Avenida Gupê 10767  
Galpão 2 - Bloco A  
Barueri - São Paulo  
CEP 06422-120  
Tel.: +55 11 47 72 72 00  
Fax: +55 11 47 72 72 10  
stauff@stauffbrasil.com

**CANADA**

STAUFF Canada Ltd.  
866 Milner Avenue  
Scarborough  
Ontario M1B 5N7  
Tel.: +1 416 282 46 08  
Fax: +1 416 282 30 39  
sales@stauffcanada.com

**CHINA**

STAUFF International Trading  
(Shanghai) Co., Ltd.  
No. 41-42, Lane 369, Chuang Ye Road  
Jushuo Industrial Zone, Kang Qiao  
Shanghai, 201319  
Tel.: +86 21 68 18 70 00  
Fax: +86 21 68 18 71 36  
info@stauff.com.cn

**FRANCE**

STAUFF S.A.S.  
230, Avenue du Grain d'Or  
Z.I. de Vineuil - Blois Sud  
41354 Vineuil-cedex  
Tel.: +33 2 54 50 55 50  
Fax: +33 2 54 42 29 19  
direction@stauffsa.com

**GERMANY**

**WALTER STAUFFENBERG GmbH & Co. KG**  
P. O. Box 1745  
D-58777 Werdohl  
Im Ehrenfeld 4  
D-58791 Werdohl  
Tel.: +49 23 92 916-0  
Fax: +49 23 92 2505  
filtrationstechnology@stauff.com  
www.stauff.com

**INDIA**

STAUFF India Pvt. Ltd.  
Gat. No. 2340  
Pune Nagar Road, Wagholi  
Pune, 412207  
Tel.: +91 20 6620 2473  
Fax: +91 20 2705 1567  
sales@stauffindia.com

**ITALY**

STAUFF Italia s.r.l.  
Viale Nuova Valassina 78  
angolo Via Baragiola sn  
20033 Desio (MI)  
Tel.: +39 0362 63 80 70  
Fax: +39 0362 63 80 69  
sales@stauff.it

**IRELAND**

STAUFF Ireland Ltd.  
Unit B3  
Weatherwell Business Park  
Clondalkin  
Dublin 22  
Tel.: +353 1457 4936  
Fax: +353 1467 0687  
sales@stauff.ie

**KOREA**

STAUFF Korea Ltd.  
1500-12, Dadae-Dong  
Saha-Ku  
Pusan, 604-826  
Tel.: +82 51 266 6666  
Fax.: +82 51 266 8866  
info@stauff.co.kr

**NEW ZEALAND**

STAUFF Corporation (NZ) Ltd.  
P. O. Box 58517  
Greenmount, Auckland  
Unit D, 103 Harris Road  
East Tamaki, Auckland  
Tel.: + 64 9 271 48 12  
Fax: + 64 9 271 48 32  
info@stauff.co.nz

**POLAND**

STAUFF Polska Sp. z o.o.  
Miszewko 43 A  
80-297 Banino  
Tel.: +48 58 660 11 60  
Fax: +48 58 629 79 52  
sales@stauff.pl

**RUSSIAN FEDERATION**

STAUFF LLC  
Office 205, Building 7  
Scharikopodschipnikovskaya 11  
Moscow, 115088  
Tel.: +7 495 987 36 29  
+7 495 223 89 61  
Fax: +7 495 679 90 48  
sales@stauff.ru

**UNITED KINGDOM**

STAUFF UK  
Unit B3  
500, Carlisle Street East  
Off Downgate Drive  
Sheffield, S4 8BS  
Tel.: +44 114 251 85 18  
Fax: +44 114 251 85 19  
sales@stauff.co.uk

**UNITED STATES**

STAUFF Corporation  
7 Wm. Demarest Place  
Waldwick, 07463-1542  
New Jersey  
Tel.: +1 201 444 78 00  
Fax: +1 201 444 78 52  
sales@stauffusa.com

Globally available through  
wholly-owned branches and  
distributors in all industrial  
countries.

STAUFF